



Prepared on
December 31, 2011

Global Barometer on Hope and Despair

Sweden

Trend data: 1977-2011

(for all years for which data are available)

Volume 2: Country Report Series



Courtesy:

The preparation of this Report and compilation of the trend data (1977-2011) has been done with the courtesy of Gallup Pakistan (www.gallup.com.pk) and Gilani Research Foundation (www.gilanifoundation.com) as a public service for members of Gallup International Association. For any further details please contact: Rushna.Shahid@gallup.com.pk

Disclaimer: Gallup International Association or its members are not related to Gallup Inc., headquartered in Washington D.C which is no longer a member of Gallup International Association. Gallup International Association does not accept responsibility for opinion polling other than its own. We require that our surveys be credited fully as Gallup International (not Gallup or Gallup Poll). For further details see website: www.Gallup-international.com



FOREWORD

The World's First and the Leading Global Barometer

The Global Barometer of Hope and Despair, conducted on the eve of every new year since 1977, happens to be the world's first Global Barometer. It was initiated and led by the renowned pollster Dr. George Gallup in that year and has since been conducted annually by research institutes affiliated with Gallup International and other associated research institutions. In 2011 we will be celebrating 34 years of its success.

In 1977 the world was still a stranger to modern computing machines on everyone's desk. It was a world in which the old Main Frame computers were available to the fortunate. Others performed their tasks in more primitive ways. The mode of communication was the Post Office supplemented by what was known as the "Telegraph and Telex Machine". Despite these limitations, the first Global Barometer was conducted by 22 Gallup International Association members across the globe. They included all the G7 countries as well as key countries from all continents. The number of countries has since risen considerably and the survey now covers a highly representative sample of global population. In 2011 the survey covers 58 countries from all parts of Asia, Africa, Latin America and Australasia.

Considering that the Global Barometer was initiated in 1977 under conditions which would now seem primitive by way of international communications as well as information technology, the archives of the Global Barometer were not in a position to present trend data in usable form. It has taken some effort to construct time series data.

It was a proud privilege for Gallup Pakistan to have accomplished that task in 2010. Despite being relatively limited in its scope, the trend data information is now usable and amendable to updation. It has been updated for the latest year (EOY: 2011)

In the covers of these pages you will find a simple computation of the top lines of country data for all years when the survey was conducted in that country. We hope that we will further refine these Reports, in due course of time.

We would particularly like to thank the team at Gallup Pakistan as well as Ms. Armida Wagman at the Gallup International Secretariat who in 2010 helped compile the trend data for the first 33 years of the series. We very much hope that with the active support of the Expert Group on Opinion Research (details on the Blog of the Group) at WIN-Gallup International we will be able to further pursue this task.

Jean-Marc Leger
President WIN-Gallup International
and

Dr. Ijaz Shafi Gilani
Chair, Expert Group on Opinion Research
WIN-Gallup International (gilani@gallup.com.pk)
December 20, 2011





**WIN-Gallup International Team of
 END OF YEAR SURVEY: 2011
 OPINION RESEARCH GROUP**

1- Panel of Experts



Matthew Warshaw
Afghanistan



Helio Gastaldi
Brazil



Dave Scholz
Canada



Celine Bracq
France



Inahiro Suzuki
Japan



Margit Cleveland
Kenya



Elida Medarovska
Macedonia



John Smurthwaite
Malaysia



Natalia Ivanisheva
Russia



Carlos Clavero
Spain

2- Research Team for EOY 2011 (Gallup Pakistan)



Manzer Ehsan



Hammad Irshad



Tahmina Shoab

3- Project Managers



Sara Salam
Pakistan



Rushna Shahid
Pakistan

4- Team Head



Klaus-Peter Schoeppner
Germany



Dr. Ijaz Shafi Gilani
Pakistan

5- President WIN-GIA



Jean-March Langer
Canada



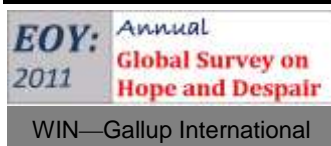


Trend of Hope and Despair in Sweden
1977-2011
(for all years for which data are available)

6- Global Research Team

(In alphabetical order of Country Name)

Name/Company/Country	Picture	Name/Company/Country	Picture
Assen Blagoev ACSOR-Surveys Afghanistan		Aram Navasardyan MPG LLC Armenia	
Gerardo Tuñón Corti IBOPE Inteligência Argentina		Bianca Mazzaferro Colmar Brunton Australia	
Ingrid Lusk Osterreichisches Gallup-Institute Austria		Ashraf Hajiye SIAR Media Azerbaijan	
Marc Dumoulin Dedicated Research Belgium		Laure IBOPE Inteligencia Brazil	
Aida Hadziavdic- Begovic Mareco Index Bosnia Bosnia		Mila Grigorova BBSS Bulgaria	
Zhou Xin CRC-Research China		Arnauld Zeufack RMS Cameroon Cameroon	
Cristina Querubin Centro Nacional de Consultoria Colombia		Sarah Weill Leger Marketing Canada	
Jan Trojacek MARECO Praha Czech Republic		* Roger Elsted DMA/ Research Denmark	
Tim Wilson Tebbutt Research Fiji Islands		Carlos A. Cordova Cedatos Ecuador	
Jari Pajunen Taloustutkimus Oy Finland		Dr.Sherine Zaklana Rada Research & Public Relations Co. Egypt	
Celine Bracq BVA France		* Johannes Huxoll TNS Emnid Germany	
Christy Szeto Consumer Search Group Hong Kong		Femi Laoye RMSI Ghana Ghana	
Vilborg Helga Hardardottir CapacentIceland Iceland		Merab Pachulia GORBI Georgia	
Yashwant Deshmukh C Voter India		Johannes Huxoll TNS Emnid Germany	
Dr. Munqih Dagher IIACSS Iraq		Sinead Mooney Red C Research and Marketing Ireland	
Paolo Colombo DOXA Italy		Dr. Munqih Dagher IIACSS Iraq	





Trend of Hope and Despair in Sweden
1977-2011
(for all years for which data are available)



Hisako Kumada
Nippon Research
Center (NRC)
Japan



Hyunjeong Jung
Gallup Korea
Korea



Selim Saad
REACH
Lebanon



Inga Nausediene
UAB RAIT
Lithuania



Ivana Todevska
BRIMA
Macedonia



Christian Batte
BJ Group
Morocco



Imre van Rooijen
Market Response
Netherlands



Josiah Kimanzi
RMS Nigeria
Nigeria



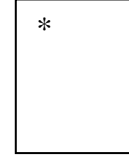
Fatima Idrees
Gallup Pakistan
Pakistan



Dr. Nabil Kukali
Palestine



Gustavo Yrala
DATUM international
Peru



Lawrence A. Dugan
Asia Research
Organization
Philippines



Olga Wiatr
MARECO Polska
Poland



Marius Bobi
TNS CSOP
Romania



Natalia Lvanisheva
ROMIR
Russian Federation



Mohammad M.Aayed
PARC
Saudi Arabia



Sladjana Brakus
TNS Medium Gallup
Serbia



Patson Gasura
Topline Research
Solution
South Africa



Luciano Miguel
Instituto DYM, S.A
Spain



Dr. Johan Lilliecreutz
CMA Research
Sweden



Barbara Schumacher
ISOPUBLIC
Switzerland



Nebil Belaam
EMRHOD
Tunisia



PervinOlgun Barem
Research
Turkey



Cindy Kaminski
Trig
USA

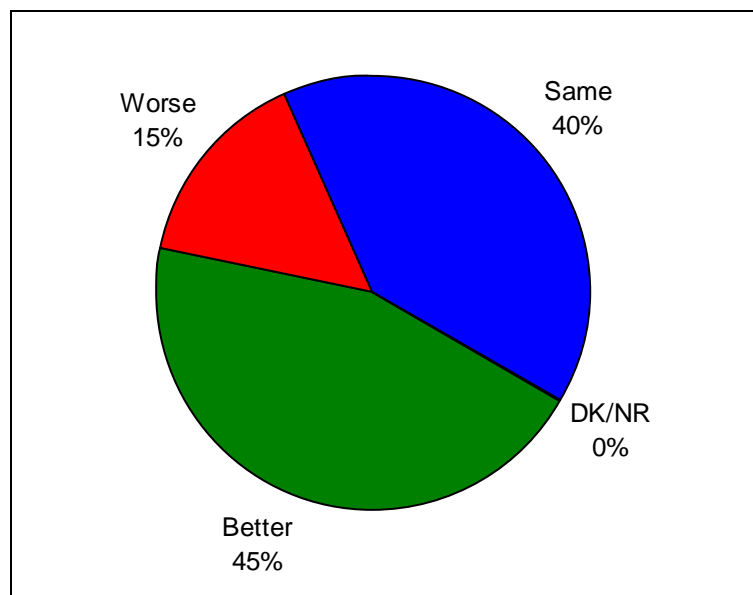


Beth Owen
Indochina Research
Vietnam



Graph for Hope and Despair in Sweden for Year 2011

Question: **So far as you are concerned do you think that 2012 will be better or worse than 2011?**



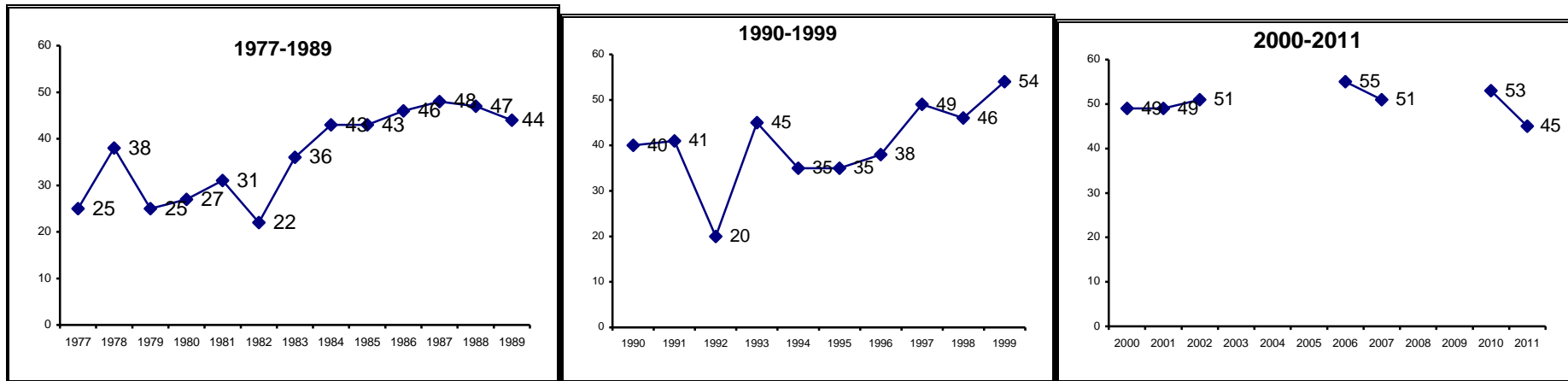
Source: Annual Global Barometer on Hope and Despair conducted by affiliates of WIN-Gallup International Association. See details on: www.gallup.com.pk, www.gallup-international.com/

(Note applicable for all tables ahead): Rounding off to 100:
When the total does not add up to 100, it is because of rounding off issues.



The trend of
Hope and Despair in Sweden
(1977-2011)

HOPE

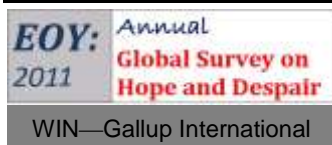


Note: Reported for all the years for which survey was carried out and data are available.

	Percent of Respondents																						
Year	1977	1978	1979	1980	1981	1982	1983	1984	1985	1986	1987	1988	1989	1990	1991	1992	1993	1994	1995	1996	1997	1998	1999
Hope	25	38	25	27	31	22	36	43	43	46	48	47	44	40	41	20	45	35	35	38	49	46	54

Year	2000	2001	2002	2006	2007	2010	2011
Hope	49	49	51	55	51	53	45

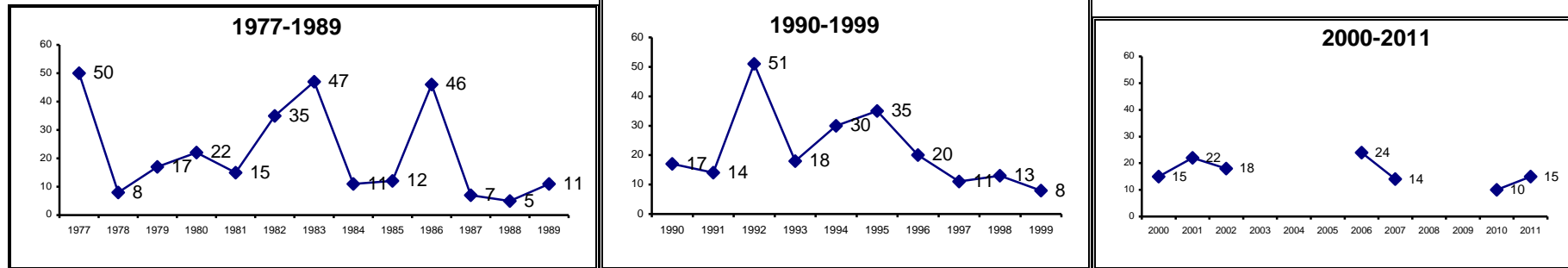
Source: Annual Global Barometer on Hope and Despair conducted by affiliates of WIN-Gallup International Association. See details on: www.gallup.com.pk, www.gallup-international.com/





Trend of Hope and Despair in Sweden
1977-2011
(for all years for which data are available)

DESPAIR



Note: Reported for all the years for which survey was carried out and data are available.

Year	1977	1978	1979	1980	1981	1982	1983	1984	1985	1986	1987	1988	1989	1990	1991	1992	1993	1994	1995	1996	1997	1998	1999
Hope	50	8	17	22	15	35	47	11	12	46	7	5	11	17	14	51	18	30	35	20	11	13	8

Year	2000	2001	2002	2006	2007	2010	2011
Hope	15	22	18	24	14	10	15

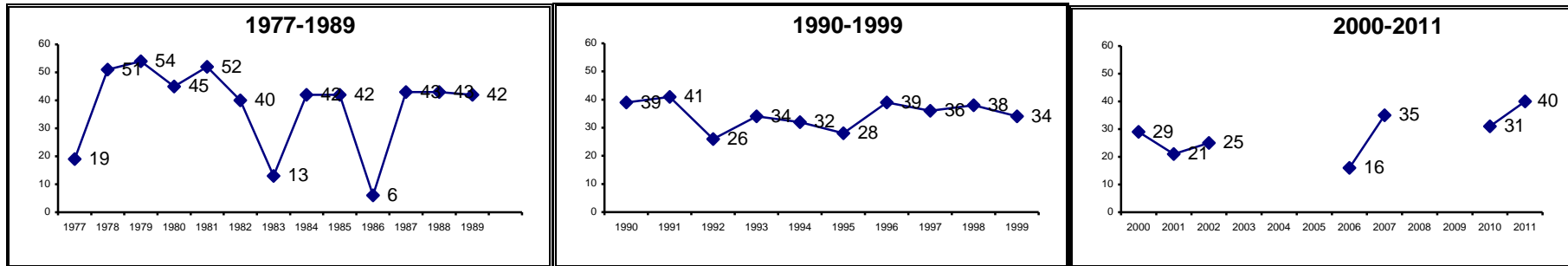
Source: Annual Global Barometer on Hope and Despair conducted by affiliates of WIN-Gallup International Association. See details on: www.gallup.com.pk, www.gallup-international.com/





Trend of Hope and Despair in Sweden
1977-2011
(for all years for which data are available)

NO CHANGE

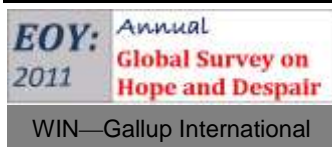


Note: Reported for all the years for which survey was carried out and data are available.

	Percent of Respondents																							
Year	1977	1978	1979	1980	1981	1982	1983	1984	1985	1986	1987	1988	1989	1990	1991	1992	1993	1994	1995	1996	1997	1998	1999	
Hope	19	51	54	45	52	40	13	42	42	6	43	43	42	39	41	26	34	32	28	39	36	38	34	

Year	2000	2001	2002	2006	2007	2010	2011
Hope	29	21	25	16	35	31	40

Source: Annual Global Barometer on Hope and Despair conducted by affiliates of WIN-Gallup International Association. See details on: www.gallup.com.pk, www.gallup-international.com/





Trend of Hope and Despair in Sweden
1977-2011
(for all years for which data are available)

Hope and Despair in Sweden

Question: **So far as you are concerned do you think that 2012 will be better or worse than 2011?**

Percent of Respondents

Serial #	Year	Better (%)	Same (%)	Worse (%)	DK/NR (%)
1	1977	25	19	50	7
2	1978	38	51	8	3
3	1979	25	54	17	4
4	1980	27	45	22	6
5	1981	31	52	15	2
6	1982	22	40	35	4
7	1983	36	13	47	3
8	1984	43	42	11	5
9	1985	43	42	12	3
10	1986	46	6	46	3
11	1987	48	43	7	2
12	1988	47	43	5	5
13	1989	44	42	11	4
14	1990	40	39	17	4
15	1991	41	41	14	4
16	1992	20	26	51	3
17	1993	45	34	18	3
18	1994	35	32	30	3
19	1995	35	28	35	2
20	1996	38	39	20	3
21	1997	49	36	11	4
22	1998	46	38	13	3
23	1999	54	34	8	4
24	2000	49	29	15	7
25	2001	49	21	22	8
26	2002	51	25	18	6
27	2006	55	16	24	5
28	2007	51	35	14	0
29	2010	53	31	10	6
30	2011	45	40	15	0

Source: Annual Global Barometer on Hope and Despair conducted by affiliates of WIN-Gallup International Association. See details on: www.gallup.com.pk, www.gallup-international.com/





Trend of Hope and Despair in Sweden
1977-2011
(for all years for which data are available)

Economic prosperity in Sweden

Question: **Compared with this year, in your opinion, will next year be a year of economic prosperity, economic difficulty or remain the same?**

Percent of Respondents

Serial #	Years	Economic prosperity (%)	Remain the same (%)	Economic Difficulty (%)	DK/NR (%)
1	1981	13	30	55	3
2	1997	22	65	12	1
3	1998	12	61	24	3
4	1999	32	57	9	2
5	2000	43	23	29	5
6	2001	32	27	37	4
7	2002	34	42	20	4
8	2006	25	51	22	2
9	2007	35	48	18	0
10	2010	38	42	14	5
11	2011	7	57	34	1

Source: Annual Global Barometer on Hope and Despair conducted by affiliates of WIN-Gallup International Association. See details on: www.gallup.com.pk, www.gallup-international.com/



Trend of Hope and Despair in Sweden

1977-2011

(for all years for which data are available)

Unemployment in Sweden

Question: In the next 12 months do you expect the number of unemployed in ... (YOUR COUNTRY) to increase a lot, to increase slightly, remain the same, fall slightly or fall a lot?

Percent of Respondents

Serial #	Years	Increase a lot (%)	Increase slight (%)	Remain the same (%)	Fall Slight (%)	Fall a lot (%)	DK/NR (%)
1	1997	4	21	25	47	2	1
2	1998	9	39	18	31	1	2
3	1999	3	15	23	53	4	2
4	2000	1	15	41	37	2	4
5	2001	12	42	25	15	2	4
6	2002	7	29	38	23	1	2
7	2006	4	21	27	38	8	3
8	2007	2	20	24	50	4	0
9	2010	3	25	26	37	3	5

Source: Annual Global Barometer on Hope and Despair conducted by affiliates of WIN-Gallup International Association. See details on: www.gallup.com.pk, www.gallup-international.com/



Trend of Hope and Despair in Sweden

1977-2011

(for all years for which data are available)

Employment in Sweden

Question: **Are you now in paid employment - either full time or part time?**

Percent of Respondents

Serial #	Years	Full time (%)	Part time (%)	No (%)
1	1997	39	15	46
2	1998	41	14	45
3	1999	42	14	44
4	2000	47	14	39
5	2001	44	14	42
6	2002	47	13	40
7	2006	54	13	33
8	2007	58	13	28
9	2010	49	15	36

Source: Annual Global Barometer on Hope and Despair conducted by affiliates of WIN-Gallup International Association. See details on: www.gallup.com.pk, www.gallup-international.com/





Trend of Hope and Despair in Sweden
1977-2011
(for all years for which data are available)

Job security in Sweden of America

Question: **Do you think your present job is safe, or do you think there's a chance you may become unemployed?**

Percent of Respondents

Serial #	Years	Present job safe (%)	Chance of unemployment (%)	DK/NR (%)
1	1997	67	29	4
2	1998	72	26	2
3	1999	74	23	3
4	2000	79	18	3
5	2001	80	17	3
6	2002	76	22	2
7	2006	79	20	0
8	2007	84	16	0
9	2010	80	16	4

Source: Annual Global Barometer on Hope and Despair conducted by affiliates of WIN-Gallup International Association. See details on: www.gallup.com.pk, www.gallup-international.com/



Trend of Hope and Despair in Sweden
1977-2011
(for all years for which data are available)

Ease of Job in Sweden

Question: If you became unemployed, do you think you'd be able to find a new job fairly quickly, or do you think it might take longer?

Percent of Respondents

Serial #	Years	New job quickly (%)	May take longer (%)	Wouldn't look (%)	DK/NR (%)
1	1997	56	36	5	3
2	1998	62	31	4	3
3	1999	68	27	2	3
4	2000	69	24	4	3
5	2001	65	28	3	4
6	2002	65	29	2	4
7	2006	62	33	2	3
8	2007	61	32	6	1
9	2010	52	31	5	12

Source: Annual Global Barometer on Hope and Despair conducted by affiliates of WIN-Gallup International Association. See details on: www.gallup.com.pk, www.gallup-international.com/





Celebrating 34 years of The World's Leading Global Barometer (1977-2011)

For more details :

Rushna Shahid
Assisting Gallup International
Opinion Research Group
Tele: +92-51-2655630
Fax : +92-51-2655632
Email: rushna.shahid@gallup.com.pk

Irene Zuettel
Gallup International
Zurich
Tele: +41 (0) 44 806 6650
Fax : +41 (0) 44 806 6660
Email:jirene.zuettel@gallup-international.com

Disclaimer: Gallup International Association is not related to Gallup Inc., headquartered in Washington D.C which is no longer a member of Gallup International Association. Gallup International Association does not accept responsibility for opinion polling other than its own. For further details see website: www.Gallup-international.com