



Prepared on
December 31, 2011

Global Barometer on Hope and Despair

Nigeria

Trend data: 1977-2011

(for all years for which data are available)

Volume 2: Country Report Series



Celebrating 34 years of The World's Leading Global Barometer (1977-2011)

Courtesy: The preparation of this Report and compilation of the trend data (1977-2011) has been done with the courtesy of Gallup Pakistan (www.gallup.com.pk) and Gilani Research Foundation (www.gilanifoundation.com) as a public service for members of Gallup International Association. For any further details please contact: Rushna.Shahid@gallup.com.pk

Disclaimer: Gallup International Association or its members are not related to Gallup Inc., headquartered in Washington D.C which is no longer a member of Gallup International Association. Gallup International Association does not accept responsibility for opinion polling other than its own. We require that our surveys be credited fully as Gallup International (not Gallup or Gallup Poll). For further details see website: www.Gallup-international.com



FOREWORD

The World's First and the Leading Global Barometer

The Global Barometer of Hope and Despair, conducted on the eve of every new year since 1977, happens to be the world's first Global Barometer. It was initiated and led by the renowned pollster Dr. George Gallup in that year and has since been conducted annually by research institutes affiliated with Gallup International and other associated research institutions. In 2011 we will be celebrating 34 years of its success.

In 1977 the world was still a stranger to modern computing machines on everyone's desk. It was a world in which the old Main Frame computers were available to the fortunate. Others performed their tasks in more primitive ways. The mode of communication was the Post Office supplemented by what was known as the "Telegraph and Telex Machine". Despite these limitations, the first Global Barometer was conducted by 22 Gallup International Association members across the globe. They included all the G7 countries as well as key countries from all continents. The number of countries has since risen considerably and the survey now covers a highly representative sample of global population. In 2011 the survey covers 58 countries from all parts of Asia, Africa, Latin America and Australasia.

Considering that the Global Barometer was initiated in 1977 under conditions which would now seem primitive by way of international communications as well as information technology, the archives of the Global Barometer were not in a position to present trend data in usable form. It has taken some effort to construct time series data.

It was a proud privilege for Gallup Pakistan to have accomplished that task in 2010. Despite being relatively limited in its scope, the trend data information is now usable and amendable to updation. It has been updated for the latest year (EOY: 2011)

In the covers of these pages you will find a simple computation of the top lines of country data for all years when the survey was conducted in that country. We hope that we will further refine these Reports, in due course of time.

We would particularly like to thank the team at Gallup Pakistan as well as Ms. Armida Wagman at the Gallup International Secretariat who in 2010 helped compile the trend data for the first 33 years of the series. We very much hope that with the active support of the Expert Group on Opinion Research (details on the Blog of the Group) at WIN-Gallup International we will be able to further pursue this task.

Jean-Marc Leger
President WIN-Gallup International
and

Dr. Ijaz Shafi Gilani
Chair, Expert Group on Opinion Research
WIN-Gallup International (gilani@gallup.com.pk)
December 20, 2011





WIN-Gallup International Team of
END OF YEAR SURVEY: 2011
OPINION RESEARCH GROUP

1- Panel of Experts



Matthew
Warsaw
Afghanistan



Helio
Gastaldi
Brazil



Dave
Scholz
Canada



Celine
Bracq
France



Inahiro
Suzuki
Japan



Margit
Cleveland
Kenya



Elida
Medarovska
Macedonia



John
Smurthwaite
Malaysia



Natalia
Ivanisheva
Russia



Carlos
Clavero
Spain

2- Research Team for EOY 2011 (Gallup Pakistan)



Manzer Ehsan



Hammad Irshad



Tahmina Shoaib

3- Project Managers



Sara
Salam
Pakistan



Rushna
Shahid
Pakistan



Klaus-Peter
Schoeppner
Germany



Dr. Ijaz Shafi
Gilani
Pakistan



Jean-March Langer
Canada

4- Team Head

5- President WIN-GIA





Trend of Hope and Despair in Nigeria
1977-2011
(for all years for which data are available)

6- Global Research Team

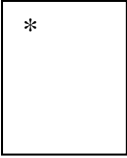
(In alphabetical order of Country Name)

Name/Company/Country	Picture	Name/Company/Country	Picture
Assen Blagoev ACSOR-Surveys Afghanistan		Aram Navasardyan MPG LLC Armenia	
Gerardo Tuñón Corti IBOPE Inteligencia Argentina		Bianca Mazzaferro Colmar Brunton Australia	
Ingrid Lusk Osterreichisches Gallup-Institute Austria		Ashraf Hajiyeu SIAR Media Azerbaijan	
Marc Dumoulin Dedicated Research Belgium		Laure IBOPE Inteligencia Brazil	
Aida Hadziavdic- Begovic Mareco Index Bosnia Bosnia		Mila Grigorova BBSS Bulgaria	
Zhou Xin CRC-Research China		Arnauld Zeufack RMS Cameroon Cameroon	
Cristina Querubin Centro Nacional de Consultoria Colombia		Sarah Weill Leger Marketing Canada	
Jan Trojacek MARECO Praha Czech Republic		Carlos A. Cordova Cedatos Ecuador	
Roger Elsted DMA/ Research Denmark	*	Dr.Sherine Zaklama Rada Research & Public Relations Co. Egypt	
Tim Wilson Tebbutt Research Fiji Islands		Johannes Huxoll TNS Emnid Germany	*
Jari Pajunen Taloustutkimus Oy Finland		Femi Laoye RMSI Ghana Ghana	
Celine Bracq BVA France		Christy Szeto Consumer Search Group Hong Kong	
Merab Pachulia GORBI Georgia		Vilborg Helga Hardardottir Capacent Iceland Iceland	
Yashwant Deshmukh C Voter India		Dr. Munqijh Dagher IIACSS Iraq	
Sinead Mooney Red C Research and Marketing Ireland		Paolo Colombo DOXA Italy	





Trend of Hope and Despair in Nigeria
1977-2011
(for all years for which data are available)



Hisako Kumada
Nippon Research
Center (NRC)
Japan



Hyunjeong Jung
Gallup Korea
Korea



Selim Saad
REACH
Lebanon



Inga Nausediene
UAB RAIT
Lithuania



Ivana Todevska
BRIMA
Macedonia



Christian Batte
BJ Group
Morocco



Imre van Rooijen
Market Response
Netherlands



Josiah Kimanzi
RMS Nigeria
Nigeria



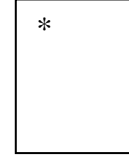
Fatima Idrees
Gallup Pakistan
Pakistan



Dr. Nabil Kukali
Palestine



Gustavo Yrala
DATUM international
Peru



Lawrence A. Dugan
Asia Research
Organization
Philippines



Olga Wiatr
MARECO Polska
Poland



Marius Bobi
TNS CSOP
Romania



Natalia Lvanisheva
ROMIR
Russian Federation



Mohammad M. Aayed
PARC
Saudi Arabia



Sladjana Brakus
TNS Medium Gallup
Serbia



Patson Gasura
Topline Research
Solution
South Africa



Luciano Miguel
Instituto DYM, S.A
Spain



Dr. Johan Lilliecreutz
CMA Research
Sweden



Barbara Schumacher
ISOPUBLIC
Switzerland



Nebil Belaam
EMRHOD
Tunisia



Pervin Olgun Barem
Research
Turkey



Cindy Kaminski
Trig
USA

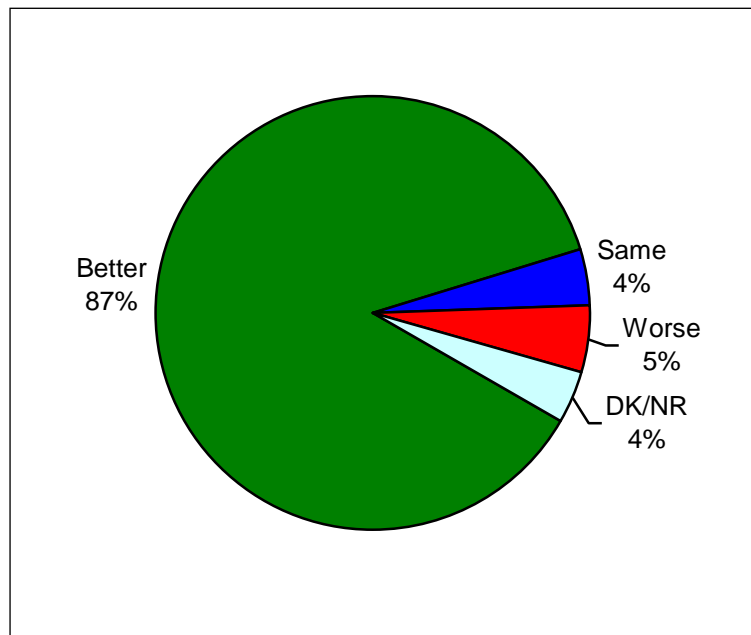


Beth Owen
Indochina Research
Vietnam



Graph for Hope and Despair in Nigeria for Year 2011

Question: **So far as you are concerned do you think that 2012 will be better or worse than 2011?**



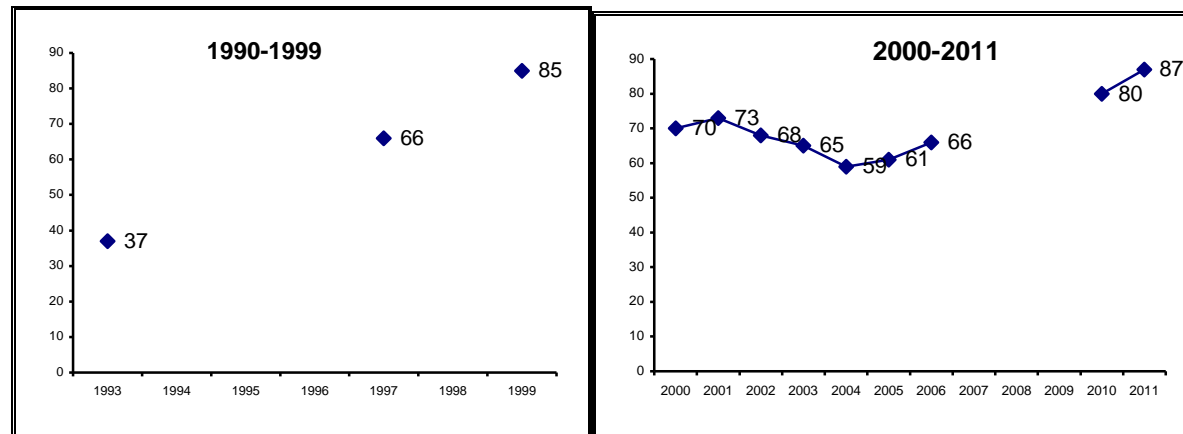
Source: Annual Global Barometer on Hope and Despair conducted by affiliates of WIN-Gallup International Association. See details on: www.gallup.com.pk, www.gallup-international.com/

(Note applicable for all tables ahead): Rounding off to 100:
When the total does not add up to 100, it is because of rounding off issues.



The trend of
Hope and Despair in Nigeria
(1993-2011)

HOPE



Note: Reported for all the years for which survey was carried out and data are available.

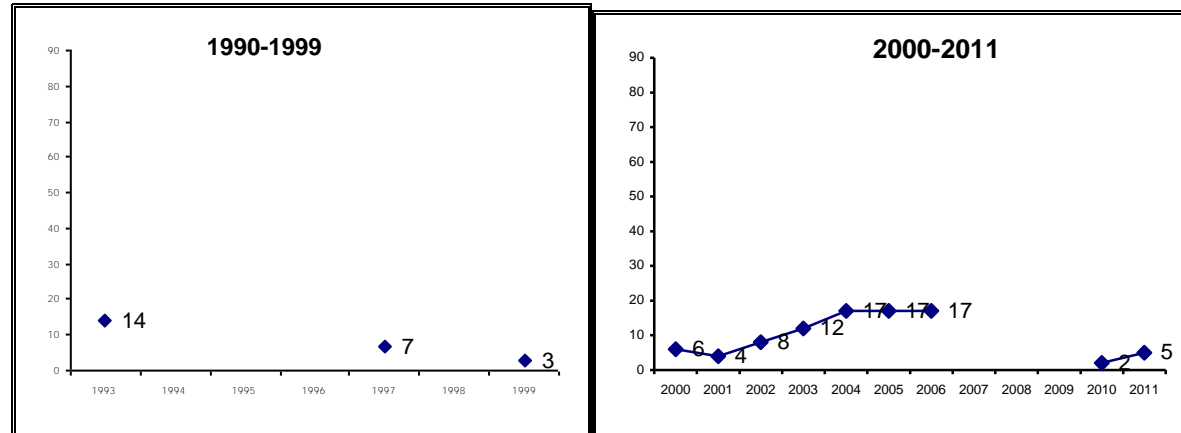
Year	Percent of Respondents											
1993	1997	1999	2000	2001	2002	2003	2004	2005	2006	2010	2011	
Hope	37	66	85	70	73	68	65	59	61	66	80	87

Source: Annual Global Barometer on Hope and Despair conducted by affiliates of WIN-Gallup International Association. See details on: www.gallup.com.pk, www.gallup-international.com/



Trend of Hope and Despair in Nigeria
1977-2011
(for all years for which data are available)

DESPAIR



Note: Reported for all the years for which survey was carried out and data are available.

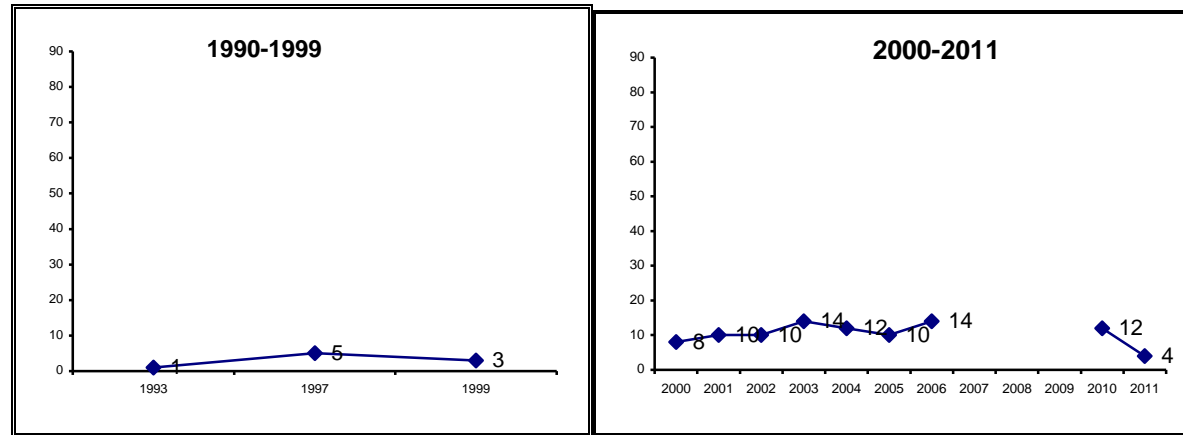
	Percent of Respondents											
Year	1993	1997	1999	2000	2001	2002	2003	2004	2005	2006	2010	2011
Despair	14	7	3	6	4	8	12	17	17	17	2	5

Source: Annual Global Barometer on Hope and Despair conducted by affiliates of WIN-Gallup International Association. See details on: www.gallup.com.pk, www.gallup-international.com/



Trend of Hope and Despair in Nigeria
1977-2011
(for all years for which data are available)

NO CHANGE



Note: Reported for all the years for which survey was carried out and data are available.

Year	Percent of Respondents											
	1993	1997	1999	2000	2001	2002	2003	2004	2005	2006	2010	2011
No change	1	5	3	8	10	10	14	12	10	14	12	4

Source: Annual Global Barometer on Hope and Despair conducted by affiliates of WIN-Gallup International Association. See details on: www.gallup.com.pk, www.gallup-international.com/



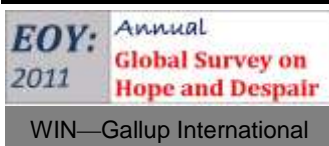
Hope and Despair in Nigeria

Question: **So far as you are concerned do you think that 2012 will be better or worse than 2011?**

Percent of Respondents

Serial #	Year	Better	Same	Worse	DK/NR
1	1993	37	1	14	48
2	1997	66	5	7	22
3	1999	85	3	3	9
4	2000	70	8	6	16
5	2001	73	10	4	13
6	2002	68	10	8	13
7	2003	65	14	12	9
8	2004	59	12	17	12
9	2005	61	10	17	12
10	2006	66	14	17	4
11	2010	80	12	2	6
12	2011	87	4	5	4

Source: Annual Global Barometer on Hope and Despair conducted by affiliates of WIN-Gallup International Association. See details on: www.gallup.com.pk, www.gallup-international.com/





Economic prosperity in Nigeria

Question: **Compared with this year, in your opinion, will next year be a year of economic prosperity, economic difficulty or remain the same?**

Percent of Respondents

Serial #	Years	Economic prosperity	Remain the same	Economic Difficulty	DK/NR
1	1997	61	10	8	21
2	1999	85	4	3	8
3	2000	68	10	6	16
4	2001	71	11	4	14
5	2002	66	13	8	13
6	2003	61	17	14	8
7	2004	55	16	18	11
8	2005	58	15	16	12
9	2006	62	19	14	5
10	2010	72	15	2	10
11	2011	86	5	6	3

Source: Annual Global Barometer on Hope and Despair conducted by affiliates of WIN-Gallup International Association. See details on: www.gallup.com.pk, www.gallup-international.com/



Unemployment in Nigeria

Question: In the next 12 months do you expect the number of unemployed in ... (YOUR COUNTRY) to increase a lot, to increase slightly, remain the same, fall slightly or fall a lot?

Percent of Respondents

Serial #	Years	Increase a lot	Increase slight	Remain the same	Fall Slight	Fall a lot	DK/NR
1	1997	31	9	8	14	20	18
2	1999	8	8	6	31	36	11
3	2000	17	10	7	29	21	16
4	2001	18	12	8	26	20	16
5	2002	18	12	11	20	25	14
6	2003	24	15	13	24	16	8
7	2004	28	18	12	17	14	12
8	2005	28	19	11	16	18	8
9	2006	25	22	11	23	16	3
10	2010	31	19	7	15	16	11

Source: Annual Global Barometer on Hope and Despair conducted by affiliates of WIN-Gallup International Association. See details on: www.gallup.com.pk, www.gallup-international.com/



Trend of Hope and Despair in Nigeria
1977-2011
(for all years for which data are available)

Employment in Nigeria

Question: **Are you now in paid employment - either full time or part time?**

Percent of Respondents

Serial #	Years	Full time	Part time	No
1	1997	29	5	66
2	1999	24	5	71
3	2000	19	5	76
4	2001	20	4	76
5	2002	21	5	74
6	2003	27	12	61
7	2004	24	7	69
8	2005	29	12	59
9	2006	31	13	56
10	2010	40	8	52

Source: Annual Global Barometer on Hope and Despair conducted by affiliates of WIN-Gallup International Association. See details on: www.gallup.com.pk, www.gallup-international.com/



Job security in Nigeria

Question: **Do you think your present job is safe, or do you think there's a chance you may become unemployed?**

Percent of Respondents

Serial #	Years	Present job safe	Chance of unemployment	DK/NR
1	1997	75	14	11
2	1999	85	10	5
3	2000	76	14	10
4	2001	77	13	10
5	2002	78	14	7
6	2003	72	18	10
7	2004	76	16	9
8	2005	67	24	9
9	2006	64	28	8
10	2010	66	11	23

Source: Annual Global Barometer on Hope and Despair conducted by affiliates of WIN-Gallup International Association. See details on: www.gallup.com.pk, www.gallup-international.com/



Trend of Hope and Despair in Nigeria
1977-2011
(for all years for which data are available)

Ease of Job in Nigeria

Question: If you became unemployed, do you think you'd be able to find a new job fairly quickly, or do you think it might take longer?

Percent of Respondents

Serial #	Years	New job quickly	May take longer	Wouldn't look	DK/NR
1	1997	29	37	8	26
2	1999	46	34	8	12
3	2000	39	33	6	22
4	2001	40	33	10	17
5	2002	35	35	6	24
6	2003	34	37	8	21
7	2004	37	37	8	18
8	2005	29	44	6	21
9	2006	23	55	9	13
10	2010	34	25	8	32

Source: Annual Global Barometer on Hope and Despair conducted by affiliates of WIN-Gallup International Association. See details on: www.gallup.com.pk, www.gallup-international.com/



Celebrating 34 years of The World's Leading Global Barometer (1977-2011)

For more details :

Rushna Shahid
Assisting Gallup International
Opinion Research Group
Tele: +92-51-2655630
Fax : +92-51-2655632
Email: rushna.shahid@gallup.com.pk

Irene Zuettel
Gallup International
Zurich
Tele: +41 (0) 44 806 6650
Fax : +41 (0) 44 806 6660
Email:jirene.zuettel@gallup-international.com

Disclaimer: Gallup International Association is not related to Gallup Inc., headquartered in Washington D.C which is no longer a member of Gallup International Association. Gallup International Association does not accept responsibility for opinion polling other than its own. For further details see website: www.Gallup-international.com