



Prepared on
December 31, 2011

Global Barometer on Hope and Despair

Malaysia

Trend data: 1977-2011

(for all years for which data are available)

Volume 2: Country Report Series



Courtesy:

The preparation of this Report and compilation of the trend data (1977-2011) has been done with the courtesy of Gallup Pakistan (www.gallup.com.pk) and Gilani Research Foundation (www.gilanifoundation.com) as a public service for members of Gallup International Association. For any further details please contact: Rushna.Shahid@gallup.com.pk

Disclaimer: Gallup International Association or its members are not related to Gallup Inc., headquartered in Washington D.C which is no longer a member of Gallup International Association. Gallup International Association does not accept responsibility for opinion polling other than its own. We require that our surveys be credited fully as Gallup International (not Gallup or Gallup Poll). For further details see website: www.Gallup-international.com



FOREWORD

The World's First and the Leading Global Barometer

The Global Barometer of Hope and Despair, conducted on the eve of every new year since 1977, happens to be the world's first Global Barometer. It was initiated and led by the renowned pollster Dr. George Gallup in that year and has since been conducted annually by research institutes affiliated with Gallup International and other associated research institutions. In 2011 we will be celebrating 34 years of its success.

In 1977 the world was still a stranger to modern computing machines on everyone's desk. It was a world in which the old Main Frame computers were available to the fortunate. Others performed their tasks in more primitive ways. The mode of communication was the Post Office supplemented by what was known as the "Telegraph and Telex Machine". Despite these limitations, the first Global Barometer was conducted by 22 Gallup International Association members across the globe. They included all the G7 countries as well as key countries from all continents. The number of countries has since risen considerably and the survey now covers a highly representative sample of global population. In 2011 the survey covers 58 countries from all parts of Asia, Africa, Latin America and Australasia.

Considering that the Global Barometer was initiated in 1977 under conditions which would now seem primitive by way of international communications as well as information technology, the archives of the Global Barometer were not in a position to present trend data in usable form. It has taken some effort to construct time series data.

It was a proud privilege for Gallup Pakistan to have accomplished that task in 2010. Despite being relatively limited in its scope, the trend data information is now usable and amendable to updation. It has been updated for the latest year (EOY: 2011)

In the covers of these pages you will find a simple computation of the top lines of country data for all years when the survey was conducted in that country. We hope that we will further refine these Reports, in due course of time.

We would particularly like to thank the team at Gallup Pakistan as well as Ms. Armida Wagman at the Gallup International Secretariat who in 2010 helped compile the trend data for the first 33 years of the series. We very much hope that with the active support of the Expert Group on Opinion Research (details on the Blog of the Group) at WIN-Gallup International we will be able to further pursue this task.

Jean-Marc Leger
President WIN-Gallup International
and

Dr. Ijaz Shafi Gilani
Chair, Expert Group on Opinion Research
WIN-Gallup International (gilani@gallup.com.pk)
December 20, 2011





WIN-Gallup International Team of

END OF YEAR SURVEY: 2011

OPINION RESEARCH GROUP

1- Panel of Experts



Matthew Warshaw
Afghanistan



Helio Gastaldi
Brazil



Dave Scholz
Canada



Celine Bracq
France



Inahiro Suzuki
Japan



Margit Cleveland
Kenya



Elida Medarovska
Macedonia



John Smurthwaite
Malaysia



Natalia Ivanisheva
Russia



Carlos Clavero
Spain

2- Research Team for EOY 2011 (Gallup Pakistan)



Manzer Ehsan



Hammad Irshad



Tahmina Shoaib

3- Project Managers



Sara Salam
Pakistan



Rushna Shahid
Pakistan

4- Team Head



Klaus-Peter Schoeppner
Germany



Dr. Ijaz Shafi Gilani
Pakistan

5- President WIN-GIA



Jean-March Langer
Canada



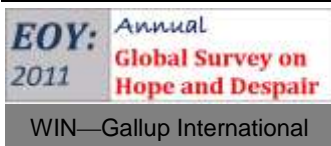


Trend of Hope and Despair in Malaysia
1977-2011
(for all years for which data are available)

6- Global Research Team

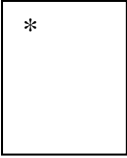
(In alphabetical order of Country Name)

Name/Company/Country	Picture	Name/Company/Country	Picture
Assen Blagoev ACSOR-Surveys Afghanistan		Aram Navasardyan MPG LLC Armenia	
Gerardo Tuñón Corti IBOPE Inteligencia Argentina		Bianca Mazzaferro Colmar Brunton Australia	
Ingrid Lusk Osterreichisches Gallup-Institute Austria		Ashraf Hajiye SIAR Media Azerbaijan	
Marc Dumoulin Dedicated Research Belgium		Laure IBOPE Inteligencia Brazil	
Aida Hadziavdic- Begovic Mareco Index Bosnia Bosnia		Mila Grigorova BBSS Bulgaria	
Zhou Xin CRC-Research China		Arnauld Zeufack RMS Cameroon Cameroon	
Cristina Querubin Centro Nacional de Consultoria Colombia		Sarah Weill Leger Marketing Canada	
Jan Trojacek MARECO Praha Czech Republic		* Roger Elsted DMA/ Research Denmark	
Tim Wilson Tebbutt Research Fiji Islands		Carlos A. Cordova Cedatos Ecuador	
Jari Pajunen Taloustutkimus Oy Finland		Dr.Sherine Zaklana Rada Research & Public Relations Co. Egypt	
Celine Bracq BVA France		* Johannes Huxoll TNS Emnid Germany	
Christy Szeto Consumer Search Group Hong Kong		Femi Laoye RMSI Ghana Ghana	
Vilborg Helga Hardardottir Capacent Iceland Iceland		Merab Pachulia GORBI Georgia	
Yashwant Deshmukh C Voter India		Johannes Huxoll TNS Emnid Germany	
Dr. Munqih Dagher IIACSS Iraq		Sinead Mooney Red C Research and Marketing Ireland	
Paolo Colombo DOXA Italy			





Trend of Hope and Despair in Malaysia
1977-2011
(for all years for which data are available)



Hisako Kumada
Nippon Research
Center (NRC)
Japan



Hyunjeong Jung
Gallup Korea
Korea



Selim Saad
REACH
Lebanon



Inga Nausėdiene
UAB RAIT
Lithuania



Ivana Todevska
BRIMA
Macedonia



Christian Batte
BJ Group
Morocco



Imre van Rooijen
Market Response
Netherlands



Josiah Kimanzi
RMS Nigeria
Nigeria



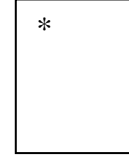
Fatima Idrees
Gallup Pakistan
Pakistan



Dr. Nabil Kukali
Palestine



Gustavo Yrala
DATUM international
Peru



Lawrence A. Dugan
Asia Research
Organization
Philippines



Olga Wiatr
MARECO Polska
Poland



Marius Bobi
TNS CSOP
Romania



Natalia Lvanisheva
ROMIR
Russian Federation



Mohammad M.Aayed
PARC
Saudi Arabia



Sladjana Brakus
TNS Medium Gallup
Serbia



Patson Gasura
Topline Research
Solution
South Africa



Luciano Miguel
Instituto DYM, S.A
Spain



Dr. Johan Lilliecreutz
CMA Research
Sweden



Barbara Schumacher
ISOPUBLIC
Switzerland



Nebil Belaam
EMRHOD
Tunisia



Pervin Olgun Barem
Research
Turkey



Cindy Kaminski
Trig
USA

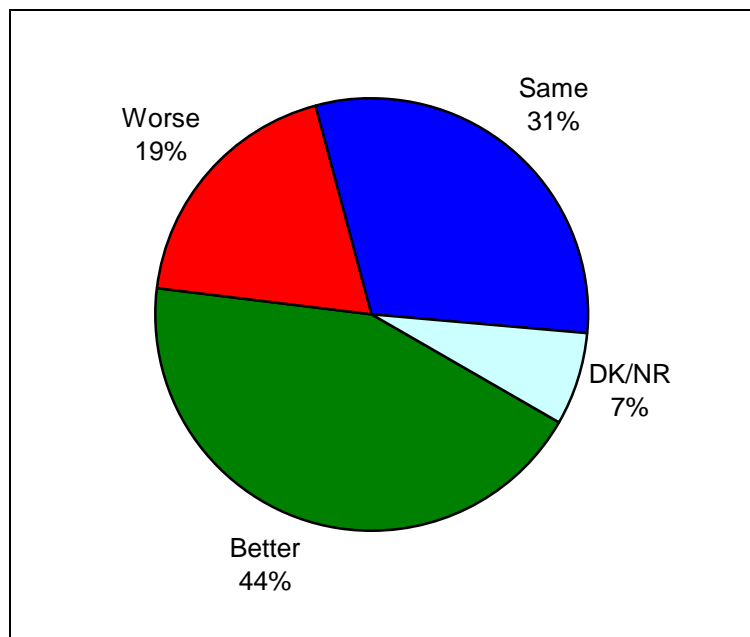


Beth Owen
Indochina Research
Vietnam



Graph for Hope and Despair in Malaysia for Year 2011

Question: **So far as you are concerned do you think that 2012 will be better or worse than 2011?**



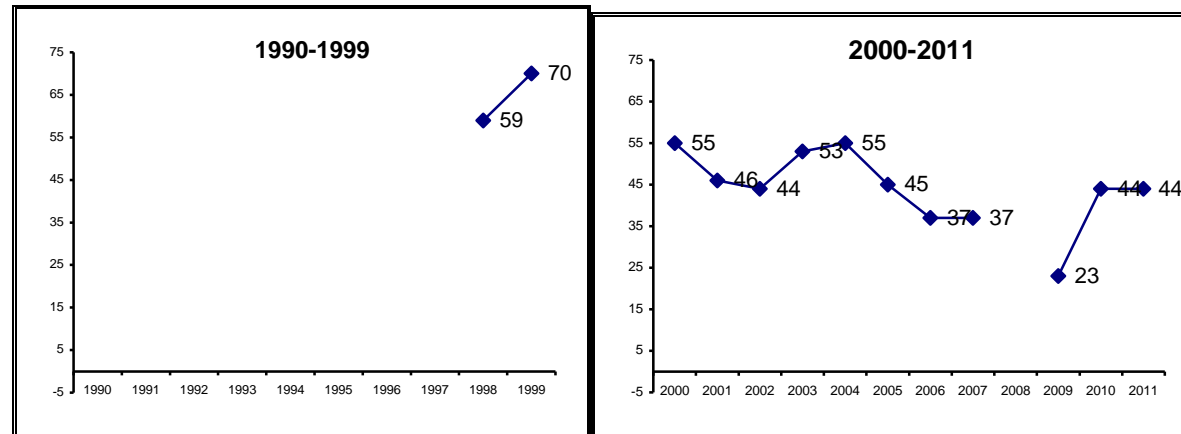
Source: Annual Global Barometer on Hope and Despair conducted by affiliates of WIN-Gallup International Association. See details on: www.gallup.com.pk, www.gallup-international.com/

(Note applicable for all tables ahead): Rounding off to 100:
When the total does not add up to 100, it is because of rounding off issues.



The trend of
Hope and Despair in Malaysia
 (1977-2011)

HOPE



Note: Reported for all the years for which survey was carried out and data are available.

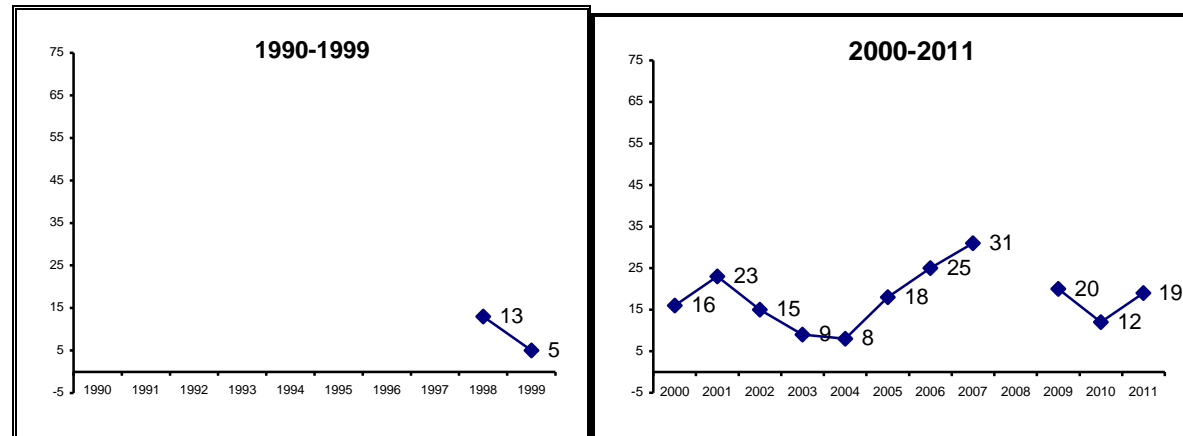
	Percent of Respondents												
Year	1998	1999	2000	2001	2002	2003	2004	2005	2006	2007	2009	2010	2011
Hope	59	70	55	46	44	53	55	45	37	37	23	44	44

Source: Annual Global Barometer on Hope and Despair conducted by affiliates of WIN-Gallup International Association. See details on: www.gallup.com.pk, www.gallup-international.com/



Trend of Hope and Despair in Malaysia
1977-2011
(for all years for which data are available)

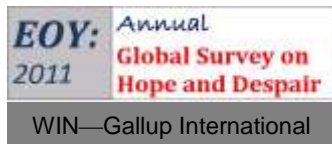
DESPAIR



Note: Reported for all the years for which survey was carried out and data are available.

Year	1998	1999	2000	2001	2002	2003	2004	2005	2006	2007	Percent of Respondents		
Despair	13	5	16	23	15	9	8	18	25	31	20	12	19

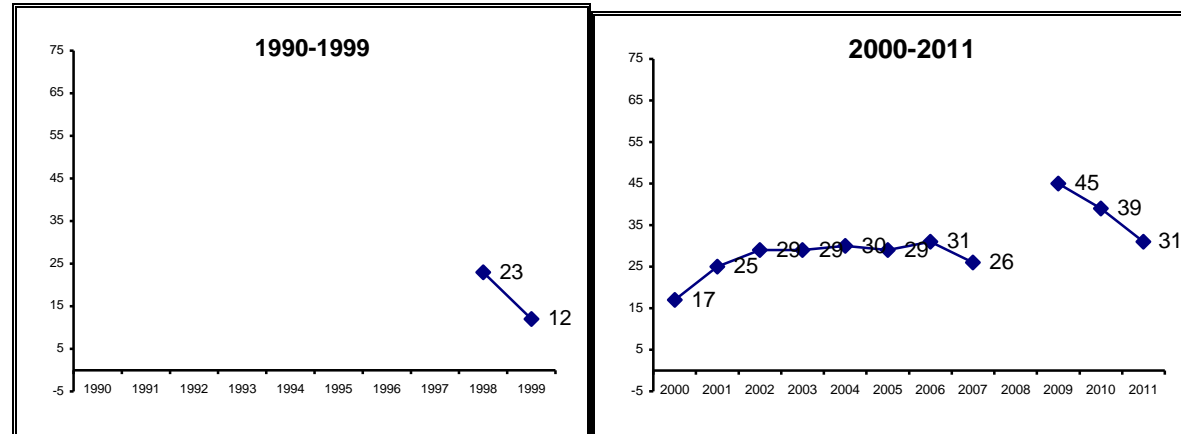
Source: Annual Global Barometer on Hope and Despair conducted by affiliates of WIN-Gallup International Association. See details on: www.gallup.com.pk, www.gallup-international.com/





Trend of Hope and Despair in Malaysia
1977-2011
(for all years for which data are available)

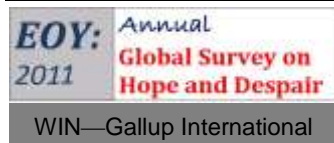
NO CHANGE



Note: Reported for all the years for which survey was carried out and data are available.

Year	1998	1999	2000	2001	2002	2003	2004	2005	2006	2007	2009	2010	2011
Despair	23	12	17	25	29	29	30	29	31	26	45	39	31

Source: Annual Global Barometer on Hope and Despair conducted by affiliates of WIN-Gallup International Association. See details on: www.gallup.com.pk, www.gallup-international.com/





Trend of Hope and Despair in Malaysia
1977-2011
(for all years for which data are available)

Hope and Despair in Malaysia

Question: **So far as you are concerned do you think that 2012 will be better or worse than 2011?**

Percent of Respondents

Serial #	Year	Better	Same	Worse	DK/NR
1	1998	59	23	13	5
2	1999	70	12	5	13
3	2000	55	17	16	12
4	2001	46	25	23	6
5	2002	44	29	15	12
6	2003	53	29	9	9
7	2004	55	30	8	7
8	2005	45	29	18	9
9	2006	37	31	25	6
10	2007	37	26	31	6
11	2009	23	45	20	12
12	2010	44	39	12	5
13	2011	44	31	19	7

Source: Annual Global Barometer on Hope and Despair conducted by affiliates of WIN-Gallup International Association. See details on: www.gallup.com.pk, www.gallup-international.com/





Economic prosperity in Malaysia

Question: **Compared with this year, in your opinion, will next year be a year of economic prosperity, economic difficulty or remain the same?**

Percent of Respondents

Serial #	Years	Economic prosperity	Remain the same	Economic Difficulty	DK/NR
1	1998	48	36	11	5
2	1999	62	23	7	8
3	2000	51	26	14	9
4	2001	38	29	27	6
5	2002	45	28	17	11
6	2003	55	29	7	9
7	2004	60	22	12	6
8	2005	41	37	16	6
9	2006	38	35	23	5
10	2007	32	35	28	5
11	2009	16	48	28	8
12	2010	34	50	11	5
13	2011	39	36	21	4

Source: Annual Global Barometer on Hope and Despair conducted by affiliates of WIN-Gallup International Association. See details on: www.gallup.com.pk, www.gallup-international.com/



Unemployment in Malaysia

Question: **In the next 12 months do you expect the number of unemployed in ... (YOUR COUNTRY) to increase a lot, to increase slightly, remain the same, fall slightly or fall a lot?**

Percent of Respondents

Serial #	Years	Increase a lot	Increase slight	Remain the same	Fall Slight	Fall a lot	DK/NR
1	1998	12	30	18	26	10	4
2	1999	10	20	17	31	13	9
3	2000	11	26	22	29	3	9
4	2001	11	42	19	21	1	6
5	2002	7	35	24	22	0	11
6	2003	4	36	24	24	1	11
7	2004	11	33	25	22	1	7
8	2005	13	45	24	11	0	7
9	2006	15	39	25	16	0	5
10	2007	23	31	20	17	1	8
11	2009	17	38	25	11	2	7
12	2010	12	26	37	13	3	9

Source: Annual Global Barometer on Hope and Despair conducted by affiliates of WIN-Gallup International Association. See details on: www.gallup.com.pk, www.gallup-international.com/



Employment in Malaysia

Question: **Are you now in paid employment - either full time or part time?**

Percent of Respondents

Serial #	Years	Full time	Part time	No
1	1998	45	7	48
2	1999	45	6	49
3	2000	49	5	46
4	2001	46	5	49
5	2002	49	3	48
6	2003	55	3	42
7	2004	52	3	45
8	2005	51	3	47
9	2006	49	3	48
10	2007	56	3	41
11	2009	52	4	44
12	2010	50	4	46

Source: Annual Global Barometer on Hope and Despair conducted by affiliates of WIN-Gallup International Association. See details on: www.gallup.com.pk, www.gallup-international.com/



Trend of Hope and Despair in Malaysia
1977-2011
(for all years for which data are available)

Job security in Malaysia

Question: **Do you think your present job is safe, or do you think there's a chance you may become unemployed?**

Percent of Respondents

Serial #	Years	Present job safe	Chance of unemployment	DK/NR
1	1998	82	14	4
2	1999	84	11	5
3	2000	83	14	3
4	2001	78	18	4
5	2002	86	10	4
6	2003	86	12	2
7	2004	89	8	2
8	2005	91	8	2
9	2006	87	12	1
10	2007	84	10	7
11	2009	59	27	14
12	2010	73	19	8

Source: Annual Global Barometer on Hope and Despair conducted by affiliates of WIN-Gallup International Association. See details on: www.gallup.com.pk, www.gallup-international.com/



Trend of Hope and Despair in Malaysia
1977-2011
(for all years for which data are available)

Ease of Job in Malaysia

Question: **If you became unemployed, do you think you'd be able to find a new job fairly quickly, or do you think it might take longer?**

Percent of Respondents

Serial #	Years	New job quickly	May take longer	Wouldn't look	DK/NR
1	1998	42	42	7	9
2	1999	50	28	10	12
3	2000	49	38	4	9
4	2001	29	57	6	8
5	2002	38	49	8	5
6	2003	39	48	8	5
7	2004	38	50	7	5
8	2005	38	48	10	5
9	2006	25	57	12	6
10	2007	31	51	13	5
11	2009	27	59	5	9
12	2010	39	45	3	13

Source: Annual Global Barometer on Hope and Despair conducted by affiliates of WIN-Gallup International Association. See details on: www.gallup.com.pk, www.gallup-international.com/



Celebrating 34 years of The World's Leading Global Barometer (1977-2011)

For more details :

Rushna Shahid
Assisting Gallup International
Opinion Research Group
Tele: +92-51-2655630
Fax : +92-51-2655632
Email: rushna.shahid@gallup.com.pk

Irene Zuettel
Gallup International
Zurich
Tele: +41 (0) 44 806 6650
Fax : +41 (0) 44 806 6660
Email:jirene.zuettel@gallup-international.com

Disclaimer: Gallup International Association is not related to Gallup Inc., headquartered in Washington D.C which is no longer a member of Gallup International Association. Gallup International Association does not accept responsibility for opinion polling other than its own. For further details see website: www.Gallup-international.com