



Prepared on
December 31, 2011

Global Barometer on Hope and Despair

Finland

Trend data: 1977-2011

(for all years for which data are available)

Volume 2: Country Report Series



Celebrating 34 years of The World's Leading Global Barometer (1977-2011)

Courtesy:

The preparation of this Report and compilation of the trend data (1977-2011) has been done with the courtesy of Gallup Pakistan (www.gallup.com.pk) and Gilani Research Foundation (www.gilanifoundation.com) as a public service for members of Gallup International Association. For any further details please contact: Rushna.Shahid@gallup.com.pk

Disclaimer: Gallup International Association or its members are not related to Gallup Inc., headquartered in Washington D.C which is no longer a member of Gallup International Association. Gallup International Association does not accept responsibility for opinion polling other than its own. We require that our surveys be credited fully as Gallup International (not Gallup or Gallup Poll). For further details see website: www.Gallup-international.com



FOREWORD

The World's First and the Leading Global Barometer

The Global Barometer of Hope and Despair, conducted on the eve of every new year since 1977, happens to be the world's first Global Barometer. It was initiated and led by the renowned pollster Dr. George Gallup in that year and has since been conducted annually by research institutes affiliated with Gallup International and other associated research institutions. In 2011 we will be celebrating 34 years of its success.

In 1977 the world was still a stranger to modern computing machines on everyone's desk. It was a world in which the old Main Frame computers were available to the fortunate. Others performed their tasks in more primitive ways. The mode of communication was the Post Office supplemented by what was known as the "Telegraph and Telex Machine". Despite these limitations, the first Global Barometer was conducted by 22 Gallup International Association members across the globe. They included all the G7 countries as well as key countries from all continents. The number of countries has since risen considerably and the survey now covers a highly representative sample of global population. In 2011 the survey covers 58 countries from all parts of Asia, Africa, Latin America and Australasia.

Considering that the Global Barometer was initiated in 1977 under conditions which would now seem primitive by way of international communications as well as information technology, the archives of the Global Barometer were not in a position to present trend data in usable form. It has taken some effort to construct time series data.

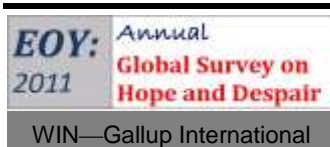
It was a proud privilege for Gallup Pakistan to have accomplished that task in 2010. Despite being relatively limited in its scope, the trend data information is now usable and amendable to updation. It has been updated for the latest year (EOY: 2011)

In the covers of these pages you will find a simple computation of the top lines of country data for all years when the survey was conducted in that country. We hope that we will further refine these Reports, in due course of time.

We would particularly like to thank the team at Gallup Pakistan as well as Ms. Armida Wagman at the Gallup International Secretariat who in 2010 helped compile the trend data for the first 33 years of the series. We very much hope that with the active support of the Expert Group on Opinion Research (details on the Blog of the Group) at WIN-Gallup International we will be able to further pursue this task.

Jean-Marc Leger
President WIN-Gallup International
and

Dr. Ijaz Shafi Gilani
Chair, Expert Group on Opinion Research
WIN-Gallup International (gilani@gallup.com.pk)
December 20, 2011





WIN-Gallup International Team of
END OF YEAR SURVEY: 2011
OPINION RESEARCH GROUP

1- Panel of Experts



Matthew Warshaw
Afghanistan



Helio Gastaldi
Brazil



Dave Scholz
Canada



Celine Bracq
France



Inahiro Suzuki
Japan



Margit Cleveland
Kenya



Elida Medarovska
Macedonia



John Smurthwaite
Malaysia



Natalia Ivanisheva
Russia



Carlos Clavero
Spain

2- Research Team for EOY 2011 (Gallup Pakistan)



Manzer Ehsan



Hammad Irshad



Tahmina Shoab

3- Project Managers



Sara Salam
Pakistan



Rushna Shahid
Pakistan



Klaus-Peter Schoeppner
Germany



Dr. Ijaz Shafi Gilani
Pakistan



Jean-March Langer
Canada

4- Team Head

5- President WIN-GIA



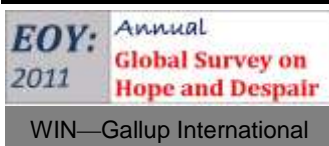


Trend of Hope and Despair in Finland
1977-2011
(for all years for which data are available)

6- Global Research Team

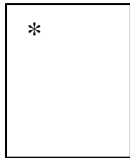
(In alphabetical order of Country Name)

Name/Company/Country	Picture	Name/Company/Country	Picture
Assen Blagoev ACSOR-Surveys Afghanistan		Aram Navasardyan MPG LLC Armenia	
Gerardo Tuñón Corti IBOPE Inteligencia Argentina		Bianca Mazzaferro Colmar Brunton Australia	
Ingrid Lusk Osterreichisches Gallup-Institute Austria		Ashraf Hajiye SIAR Media Azerbaijan	
Marc Dumoulin Dedicated Research Belgium		Laure IBOPE Inteligencia Brazil	
Aida Hadziavdic- Begovic Mareco Index Bosnia Bosnia		Mila Grigorova BBSS Bulgaria	
Arnould Zeufack RMS Cameroon Cameroon		Sarah Weill Leger Marketing Canada	
Zhou Xin CRC-Research China		Jan Trojacek MARECO Praha Czech Republic	
Cristina Querubin Centro Nacional de Consultoria Colombia		Roger Elsted DMA/ Research Denmark	
Carlos A. Cordova Cedatos Ecuador		Dr.Sherine Zaklana Rada Research & Public Relations Co. Egypt	
Tim Wilson Tebbutt Research Fiji Islands		Celine Bracq BVA France	
Jari Pajunen Taloustutkimus Oy Finland		Merab Pachulia GORBI Georgia	
Johannes Huxoll TNS Emnid Germany		Femi Laoye RMSI Ghana Ghana	
Christy Szeto Consumer Search Group Hong Kong		Dr. Munqij Dagher IIACSS Iraq	
Vilborg Helga Hardardottir Capacent Iceland Iceland		Sinead Mooney Red C Research and Marketing Ireland	
Yashwant Deshmukh C Voter India		Paolo Colombo DOXA Italy	





Trend of Hope and Despair in Finland
1977-2011
(for all years for which data are available)



Hisako Kumada
Nippon Research
Center (NRC)
Japan



Hyunjeong Jung
Gallup Korea
Korea



Selim Saad
REACH
Lebanon



Inga Nausėdiene
UAB RAIT
Lithuania



Ivana Todevska
BRIMA
Macedonia



Christian Batte
BJ Group
Morocco



Imre van Rooijen
Market Response
Netherlands



Josiah Kimanzi
RMS Nigeria
Nigeria



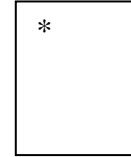
Fatima Idrees
Gallup Pakistan
Pakistan



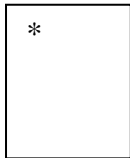
Dr. Nabil Kukali
Palestine



Gustavo Yrala
DATUM international
Peru



Lawrence A. Dugan
Asia Research
Organization
Philippines



Olga Wiatr
MARECO Polska
Poland



Marius Bobi
TNS CSOP
Romania



Natalia Lvanisheva
ROMIR
Russian Federation



Mohammad M.Aayed
PARC
Saudi Arabia



Sladjana Brakus
TNS Medium Gallup
Serbia



Patson Gasura
Topline Research
Solution
South Africa



Luciano Miguel
Instituto DYM, S.A
Spain



Dr. Johan Lilliecreutz
CMA Research
Sweden



Barbara Schumacher
ISOPUBLIC
Switzerland



Nebil Belaam
EMRHOD
Tunisia



Pervin Olgun Barem
Research
Turkey



Cindy Kaminski
Trig
USA

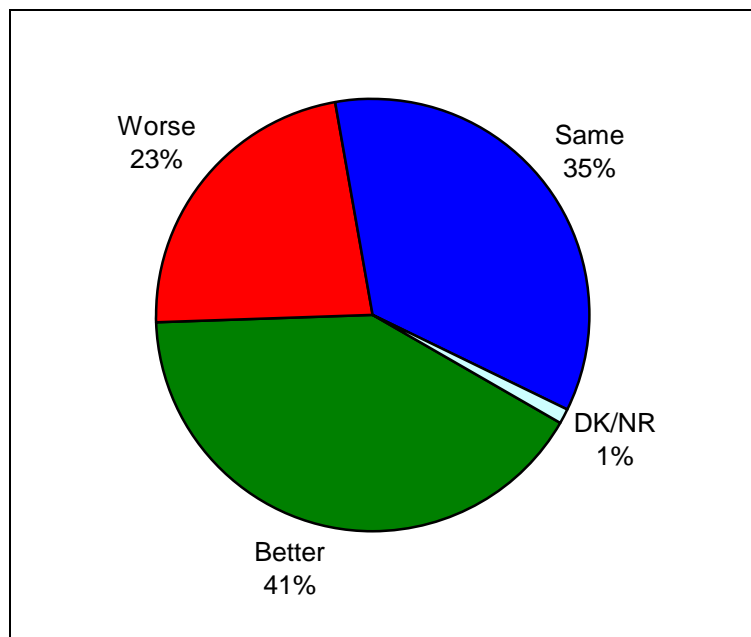


Beth Owen
Indochina Research
Vietnam



Graph for Hope and Despair in Finland for Year 2011

Question: **So far as you are concerned do you think that 2012 will be better or worse than 2011?**



Source: Annual Global Barometer on Hope and Despair conducted by affiliates of WIN-Gallup International Association. See details on: www.gallup.com.pk, www.gallup-international.com/

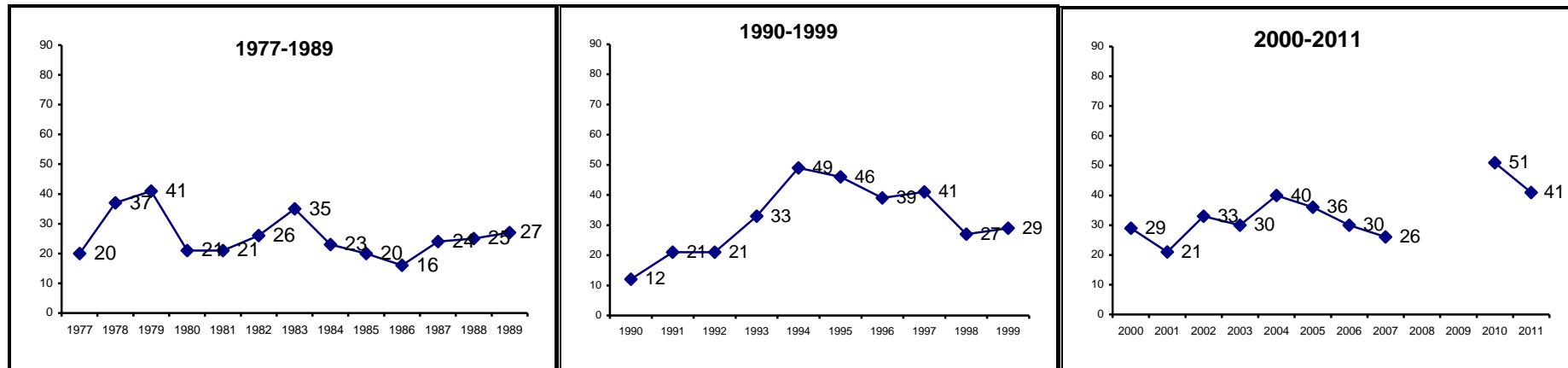
(Note applicable for all tables ahead): Rounding off to 100:
When the total does not add up to 100, it is because of rounding off issues.



Trend of Hope and Despair in Finland
1977-2011
(for all years for which data are available)

The trend of
Hope and Despair in Finland
(1977-2011)

HOPE



Note: Reported for all the years for which survey was carried out and data are available.

Year	1977	1978	1979	1980	1981	1982	1983	1984	1985	1986	1987	1988	1989	1990	1991	1992	1993	1994	1995	1996	1997	1998	1999
Hope	20	37	41	21	21	26	35	23	20	16	24	25	27	12	21	21	33	49	46	39	41	27	29

Year	2000	2001	2002	2003	2004	2005	2006	2007	2010	2011
Hope	29	21	33	30	40	36	30	26	51	41

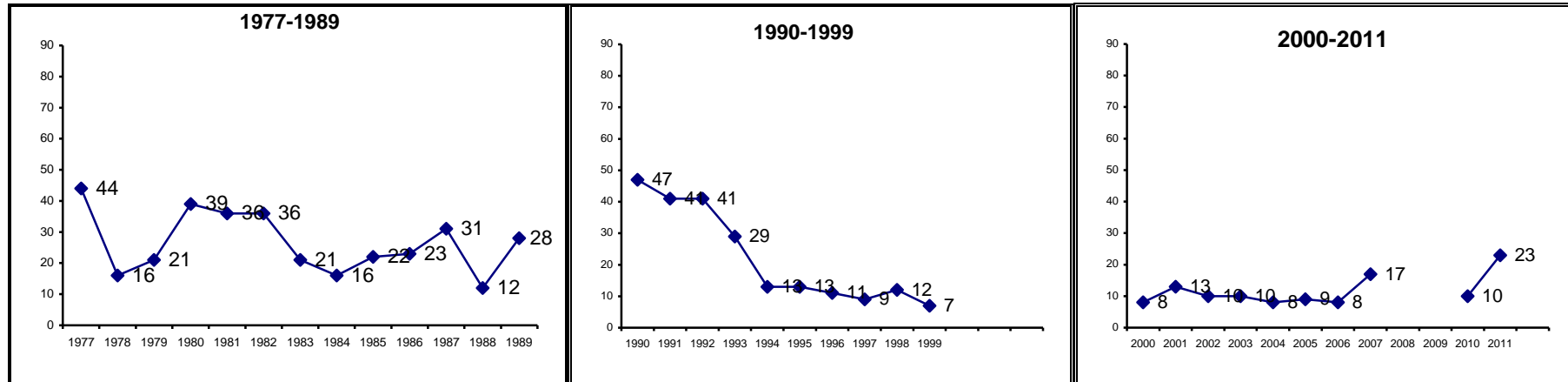
Source: Annual Global Barometer on Hope and Despair conducted by affiliates of WIN-Gallup International Association. See details on: www.gallup.com.pk, www.gallup-international.com/





Trend of Hope and Despair in Finland
1977-2011
(for all years for which data are available)

DESPAIR



Note: Reported for all the years for which survey was carried out and data are available.

Year	1977	1978	1979	1980	1981	1982	1983	1984	1985	1986	1987	1988	1989	1990	1991	1992	1993	1994	1995	1996	1997	1998	1999
Despair	44	16	21	39	36	36	21	16	22	23	31	12	28	47	41	41	29	13	13	11	9	12	7

Percent of Respondents

Year	2000	2001	2002	2003	2004	2005	2006	2007	2010	2011
Despair	8	13	10	10	8	9	8	17	10	23

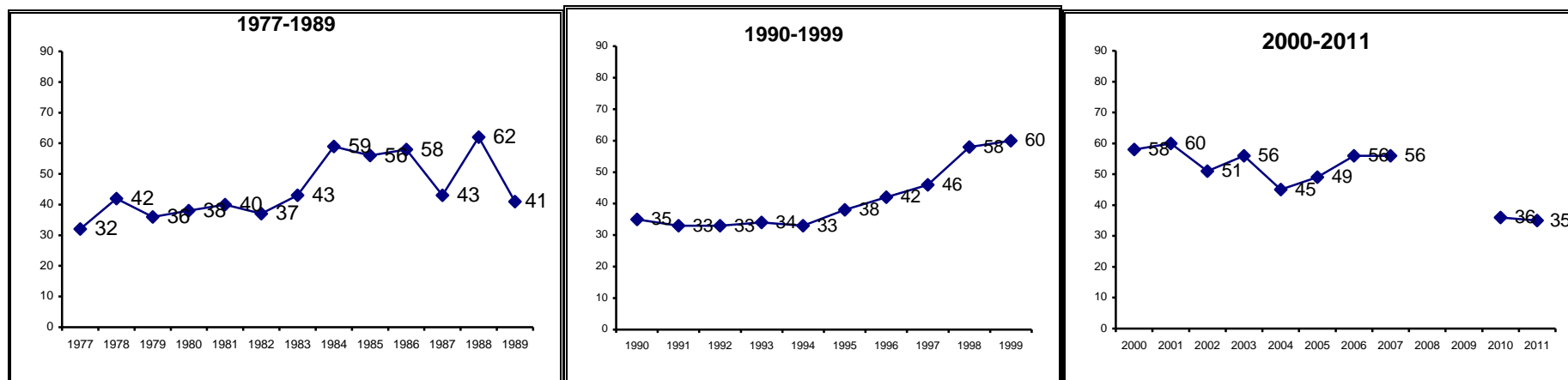
Source: Annual Global Barometer on Hope and Despair conducted by affiliates of WIN-Gallup International Association. See details on: www.gallup.com.pk, www.gallup-international.com/





Trend of Hope and Despair in Finland
1977-2011
(for all years for which data are available)

NO CHANGE



Note: Reported for all the years for which survey was carried out and data are available.

Year	1977	1978	1979	1980	1981	1982	1983	1984	1985	1986	1987	1988	1989	1990	1991	1992	1993	1994	1995	1996	1997	1998	1999
Hope	32	42	36	38	40	37	43	59	56	58	43	62	41	35	33	33	34	33	38	42	46	58	60

Year	2000	2001	2002	2003	2004	2005	2006	2007	2010	2011
Hope	58	60	51	56	45	49	56	56	36	35

Source: Annual Global Barometer on Hope and Despair conducted by affiliates of WIN-Gallup International Association. See details on: www.gallup.com.pk, www.gallup-international.com/





Trend of Hope and Despair in Finland
1977-2011
(for all years for which data are available)

Hope and Despair in Finland

Question: **So far as you are concerned do you think that 2012 will be better or worse than 2011?**

Percent of Respondents

Serial #	Year	Better (%)	Same (%)	Worse (%)	DK/NR (%)
1	1977	20	32	44	3
2	1978	37	42	16	5
3	1979	41	36	21	2
4	1980	21	38	39	3
5	1981	21	40	36	3
6	1982	26	37	36	1
7	1983	35	43	21	1
8	1984	23	59	16	2
9	1985	20	56	22	2
10	1986	16	58	23	3
11	1987	24	43	31	2
12	1988	25	62	12	1
13	1989	27	41	28	3
14	1990	12	35	47	6
15	1991	21	33	41	5
16	1992	21	33	41	5
17	1993	33	34	29	4
18	1994	49	33	13	5
19	1995	46	38	13	4
20	1996	39	42	11	8
21	1997	41	46	9	5
22	1998	27	58	12	3
23	1999	29	60	7	4
24	2000	29	58	8	5
25	2001	21	60	13	6
26	2002	33	51	10	6
27	2003	30	56	10	4
28	2004	40	45	8	7
29	2005	36	49	9	6
30	2006	30	56	8	5
31	2007	26	56	17	1
32	2010	51	36	10	2
33	2011	41	35	23	1

Source: Annual Global Barometer on Hope and Despair conducted by affiliates of WIN-Gallup International Association. See details on: www.gallup.com.pk, www.gallup-international.com/





Trend of Hope and Despair in Finland
1977-2011
(for all years for which data are available)

Economic prosperity in Finland

Question: **Compared with this year, in your opinion, will next year be a year of economic prosperity, economic difficulty or remain the same?**

Percent of Respondents

Serial #	Years	Economic prosperity (%)	Remain the same (%)	Economic Difficulty (%)	DK/NR (%)
1	1977	3	23	71	3
2	1978	5	40	48	7
3	1979	22	40	33	5
4	1980	3	62	33	2
5	1981	3	64	28	5
6	1983	7	16	74	3
7	1987	9	59	30	3
8	1988	7	82	7	3
9	1997	15	66	12	7
10	1998	7	73	15	5
11	1999	16	68	9	7
12	2000	11	70	13	6
13	2001	6	68	20	6
14	2002	10	67	16	7
15	2003	9	68	14	9
16	2004	13	66	13	8
17	2005	14	66	14	6
18	2006	13	66	15	7
19	2007	11	67	22	.
20	2010	32	51	16	1
21	2011	18	50	32	0

Source: Annual Global Barometer on Hope and Despair conducted by affiliates of WIN-Gallup International Association. See details on: www.gallup.com.pk, www.gallup-international.com/





Trend of Hope and Despair in Finland
1977-2011
(for all years for which data are available)

Unemployment in Finland

Question: **In the next 12 months do you expect the number of unemployed in ... (YOUR COUNTRY) to increase a lot, to increase slightly, remain the same, fall slightly or fall a lot?**

Percent of Respondents

Serial #	Years	Increase a lot (%)	Increase slight (%)	Remain the same (%)	Fall Slight (%)	Fall a lot (%)	DK/NR (%)
1	1997	2	12	31	50	2	3
2	1998	3	22	32	39	1	3
3	1999	1	11	32	50	1	5
4	2000	1	14	37	43	1	4
5	2001	5	51	30	10	1	3
6	2002	5	46	33	10	0	6
7	2003	6	40	30	13	1	10
8	2004	5	33	35	19	1	7
9	2005	5	27	35	26	1	6
10	2006	2	20	36	34	1	7
11	2007	4	22	42	31	2	.
12	2010	6	25	32	34	1	1

Source: Annual Global Barometer on Hope and Despair conducted by affiliates of WIN-Gallup International Association. See details on: www.gallup.com.pk, www.gallup-international.com/





Trend of Hope and Despair in Finland
1977-2011
(for all years for which data are available)

Employment in Finland

Question: **Are you now in paid employment - either full time or part time?**

Percent of Respondents

Serial #	Years	Full time (%)	Part time (%)	No (%)
1	1997	53	6	41
2	1998	50	6	44
3	1999	53	7	40
4	2000	53	7	40
5	2001	51	7	42
6	2002	50	9	41
7	2003	47	8	45
8	2004	50	8	42
9	2005	50	9	41
10	2006	52	8	39
11	2007	55	10	35
12	2010	41	8	50

Source: Annual Global Barometer on Hope and Despair conducted by affiliates of WIN-Gallup International Association. See details on: www.gallup.com.pk, www.gallup-international.com/





Trend of Hope and Despair in Finland
1977-2011
(for all years for which data are available)

Job security in Finland

Question: **Do you think your present job is safe, or do you think there's a chance you may become unemployed?**

Percent of Respondents

Serial #	Years	Present job safe (%)	Chance of unemployment (%)	DK/NR (%)
1	1997	68	23	9
2	1998	67	23	10
3	1999	72	20	8
4	2000	74	18	8
5	2001	67	23	10
6	2002	71	23	6
7	2003	68	24	8
8	2004	71	24	5
9	2005	70	22	7
10	2006	71	23	6
11	2007	76	24	8
12	2010	80	18	2

Source: Annual Global Barometer on Hope and Despair conducted by affiliates of WIN-Gallup International Association. See details on: www.gallup.com.pk, www.gallup-international.com/





Trend of Hope and Despair in Finland
1977-2011
(for all years for which data are available)

Ease of Job in Finland

Question: If you became unemployed, do you think you'd be able to find a new job fairly quickly, or do you think it might take longer?

Percent of Respondents

Serial #	Years	New job quickly (%)	May take longer (%)	Wouldn't look (%)	DK/NR (%)
1	1997	38	47	6	9
2	1998	40	42	8	10
3	1999	50	33	8	9
4	2000	46	37	8	9
5	2001	43	39	6	12
6	2002	45	38	9	8
7	2003	41	40	10	9
8	2004	48	35	10	7
9	2005	48	37	9	7
10	2006	48	36	9	8
11	2007	55	36	8	
12	2008	26	43	12	19
13	2009	39	56	4	1
14	2010	55	37	5	3

Source: Annual Global Barometer on Hope and Despair conducted by affiliates of WIN-Gallup International Association. See details on: www.gallup.com.pk, www.gallup-international.com/





Celebrating 34 years of The World's Leading Global Barometer (1977-2011)

For more details :

Rushna Shahid
Assisting Gallup International
Opinion Research Group
Tele: +92-51-2655630
Fax : +92-51-2655632
Email: rushna.shahid@gallup.com.pk

Irene Zuettel
Gallup International
Zurich
Tele: +41 (0) 44 806 6650
Fax : +41 (0) 44 806 6660
Email:jirene.zuettel@gallup-international.com

Disclaimer: Gallup International Association is not related to Gallup Inc., headquartered in Washington D.C which is no longer a member of Gallup International Association. Gallup International Association does not accept responsibility for opinion polling other than its own. For further details see website: www.Gallup-international.com