



Prepared on
December 31, 2011

Global Barometer on Hope and Despair

Czech Republic

Trend data: 1977-2011

(for all years for which data are available)

Volume 2: Country Report Series



World's First Global Barometer
1977-2011



Celebrating 34 years of The World's Leading Global Barometer (1977-2011)

Courtesy:

The preparation of this Report and compilation of the trend data (1977-2011) has been done with the courtesy of Gallup Pakistan (www.gallup.com.pk) and Gilani Research Foundation (www.gilanifoundation.com) as a public service for members of Gallup International Association. For any further details please contact: Rushna.Shahid@gallup.com.pk

Disclaimer: Gallup International Association or its members are not related to Gallup Inc., headquartered in Washington D.C which is no longer a member of Gallup International Association. Gallup International Association does not accept responsibility for opinion polling other than its own. We require that our surveys be credited fully as Gallup International (not Gallup or Gallup Poll). For further details see website: www.Gallup-international.com



FOREWORD

The World's First and the Leading Global Barometer

The Global Barometer of Hope and Despair, conducted on the eve of every new year since 1977, happens to be the world's first Global Barometer. It was initiated and led by the renowned pollster Dr. George Gallup in that year and has since been conducted annually by research institutes affiliated with Gallup International and other associated research institutions. In 2011 we will be celebrating 34 years of its success.

In 1977 the world was still a stranger to modern computing machines on everyone's desk. It was a world in which the old Main Frame computers were available to the fortunate. Others performed their tasks in more primitive ways. The mode of communication was the Post Office supplemented by what was known as the "Telegraph and Telex Machine". Despite these limitations, the first Global Barometer was conducted by 22 Gallup International Association members across the globe. They included all the G7 countries as well as key countries from all continents. The number of countries has since risen considerably and the survey now covers a highly representative sample of global population. In 2011 the survey covers 58 countries from all parts of Asia, Africa, Latin America and Australasia.

Considering that the Global Barometer was initiated in 1977 under conditions which would now seem primitive by way of international communications as well as information technology, the archives of the Global Barometer were not in a position to present trend data in usable form. It has taken some effort to construct time series data.

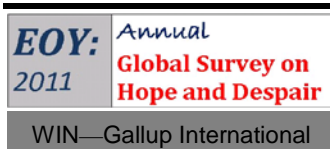
It was a proud privilege for Gallup Pakistan to have accomplished that task in 2010. Despite being relatively limited in its scope, the trend data information is now usable and amendable to updation. It has been updated for the latest year (EOY: 2011)

In the covers of these pages you will find a simple computation of the top lines of country data for all years when the survey was conducted in that country. We hope that we will further refine these Reports, in due course of time.

We would particularly like to thank the team at Gallup Pakistan as well as Ms. Armida Wagman at the Gallup International Secretariat who in 2010 helped compile the trend data for the first 33 years of the series. We very much hope that with the active support of the Expert Group on Opinion Research (details on the Blog of the Group) at WIN-Gallup International we will be able to further pursue this task.

Jean-Marc Leger
President WIN-Gallup International
and

Dr. Ijaz Shafi Gilani
Chair, Expert Group on Opinion Research
WIN-Gallup International (gilani@gallup.com.pk)
December 20, 2011





Trend of H Hope and Despair in Czech Republic

1977-2011

(for all years for which data are available)

WIN-Gallup International Team of END OF YEAR SURVEY: 2011

OPINION RESEARCH GROUP

1- Panel of Experts



Matthew Warshaw
Afghanistan



Helio Gastaldi
Brazil



Dave Scholz
Canada



Celine Bracq
France



Inahiro Suzuki
Japan



Margit Cleveland
Kenya



Elida Medarovska
Macedonia



John Smurthwaite
Malaysia



Natalia Ivanisheva
Russia



Carlos Clavero
Spain

2- Research Team for EOY 2011 (Gallup Pakistan)



Manzer Ehsan



Hammad Irshad



Tahmina Shoab

3- Project Managers



Sara Salam
Pakistan



Rushna Shahid
Pakistan



Klaus-Peter Schoeppner
Germany



Dr. Ijaz Shafi Gilani
Pakistan

5- President WIN-GIA



Jean-March Langer
Canada





Trend of H Hope and Despair in Czech Republic

1977-2011

(for all years for which data are available)

6- Global Research Team

(In alphabetical order of Country Name)

Name/Company/Country	Picture	Name/Company/Country	Picture
Assen Blagoev ACSOR-Surveys Afghanistan		Aram Navasardyan MPG LLC Armenia	
Gerardo Tuñón Corti IBOPE Inteligência Argentina		Bianca Mazzaferro Colmar Brunton Australia	
Marc Dumoulin Dedicated Research Belgium		Ingrid Lusk Osterreichisches Gallup-Institute Austria	
Aida Hadziavdic-Begovic Mareco Index Bosnia		Ashraf Hajiye SIAR Media Azerbaijan	
Laure IBOPE Inteligencia Brazil		Mila Grigorova BBSS Bulgaria	
Cristina Querubin Centro Nacional de Consultoria Colombia		Arnauld Zeufack RMS Cameroon Cameroon	
Jan Trojacek MARECO Praha Czech Republic		Sarah Weill Leger Marketing Canada	
Roger Elsted DMA/ Research Denmark		Carlos A. Cordova Cedatos Ecuador	
Dr. Sherine Zaklana Rada Research & Public Relations Co. Egypt		Femi Laoye RMSI Ghana Ghana	
Tim Wilson Tebbutt Research Fiji Islands		Johannes Huxoll TNS Emnid Germany	
Christy Szeto Consumer Search Group Hong Kong		Merab Pachulia GORBI Georgia	
Vilborg Helga Hardardottir Capacent Iceland Iceland		Johannes Huxoll TNS Emnid Germany	
Yashwant Deshmukh C Voter India		Sinead Mooney Red C Research and Marketing Ireland	
Dr. Munqih Dagher IIACSS Iraq		Paolo Colombo DOXA Italy	



Trend of H Hope and Despair in Czech Republic

1977-2011

(for all years for which data are available)



Hisako Kumada
Nippon Research
Center (NRC)
Japan



Hyunjeong Jung
Gallup Korea
Korea



Selim Saad
REACH
Lebanon



Inga Nausediene
UAB RAIT
Lithuania



Ivana Todevska
BRIMA
Macedonia



Christian Batte
BJ Group
Morocco



Imre van Rooijen
Market Response
Netherlands



Josiah Kimanzi
RMS Nigeria
Nigeria



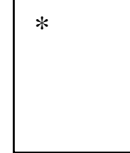
Fatima Idrees
Gallup Pakistan
Pakistan



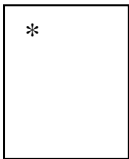
Dr. Nabil Kukali
Palestine



Gustavo Yraia
DATUM international
Peru



Lawrence A. Dugan
Asia Research
Organization
Philippines



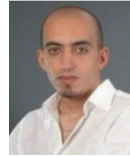
Olga Wiatr
MARECO Polska
Poland



Marius Bobi
TNS CSOP
Romania



Natalia Lvanisheva
ROMIR
Russian Federation



Mohammad M.Aayed
PARC
Saudi Arabia



Sladjana Brakus
TNS Medium Gallup
Serbia



Patson Gasura
Topline Research
Solution
South Africa



Luciano Miguel
Instituto DYM, S.A
Spain



Dr. Johan Lilliecreutz
CMA Research
Sweden



Barbara Schumacher
ISOPUBLIC
Switzerland



Nebil Belaam
EMRHOD
Tunisia



Pervin Olgun Barem
Research
Turkey



Cindy Kaminski
Trig
USA

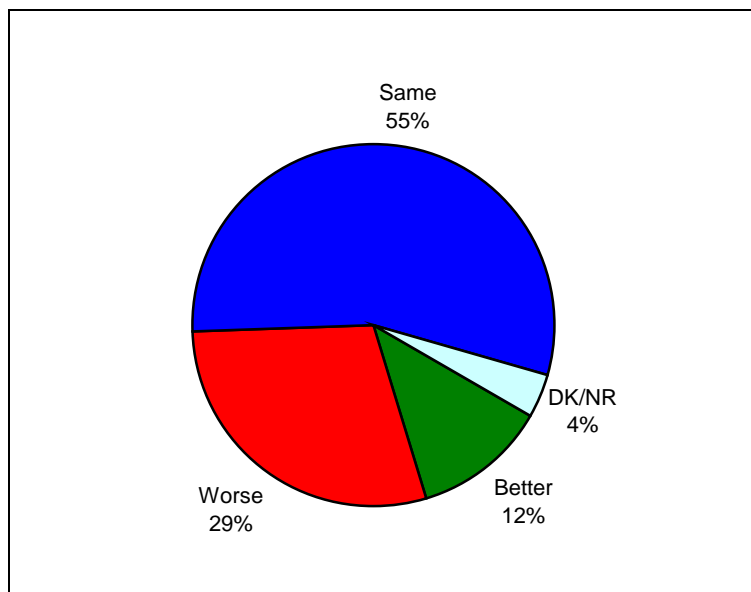


Beth Owen
Indochina Research
Vietnam



Graph for Hope and Despair in Czech Republic for Year 2011

Question: **So far as you are concerned do you think that 2012 will be better or worse than 2011?**



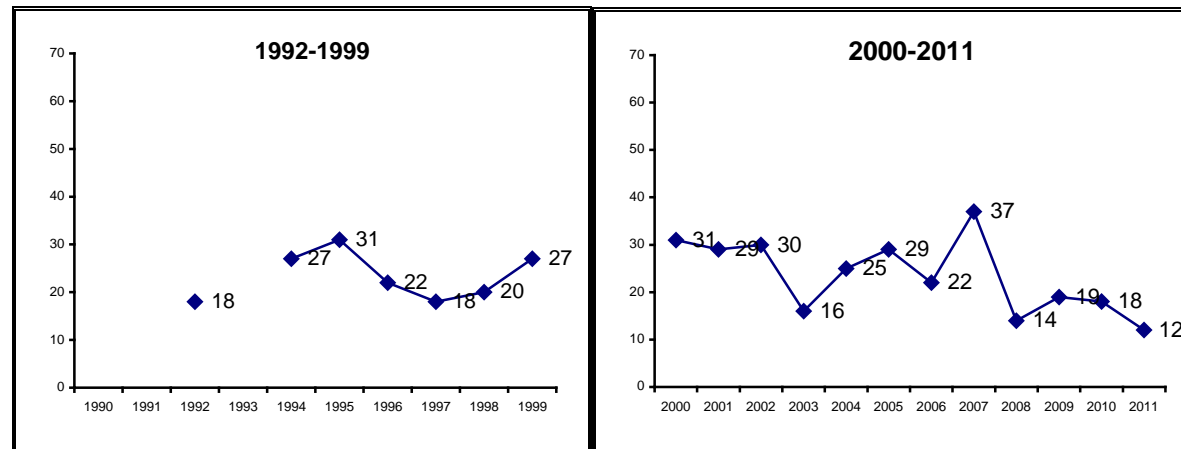
Source: Annual Global Barometer on Hope and Despair conducted by affiliates of WIN-Gallup International Association. See details on: www.gallup.com.pk, www.gallup-international.com/

(Note applicable for all tables ahead): Rounding off to 100:
When the total does not add up to 100, it is because of rounding off issues.



The trend of
Hope and Despair in Czech Republic
(1977-2011)

HOPE



Note: Reported for all the years for which survey was carried out and data are available.

Year	1992	1994	1995	1996	1997	1998	1999	2000	2001	2002	2003	2004	2005	2006	2007	2008	2009	2010	2011
Hope	18	27	31	22	18	20	27	31	29	30	16	25	29	22	37	14	19	18	12

Percent of Respondents

Source: Annual Global Barometer on Hope and Despair conducted by affiliates of WIN-Gallup International Association. See details on: www.gallup.com.pk, www.gallup-international.com/

EOY: Annual
2011 **Global Survey on
Hope and Despair**

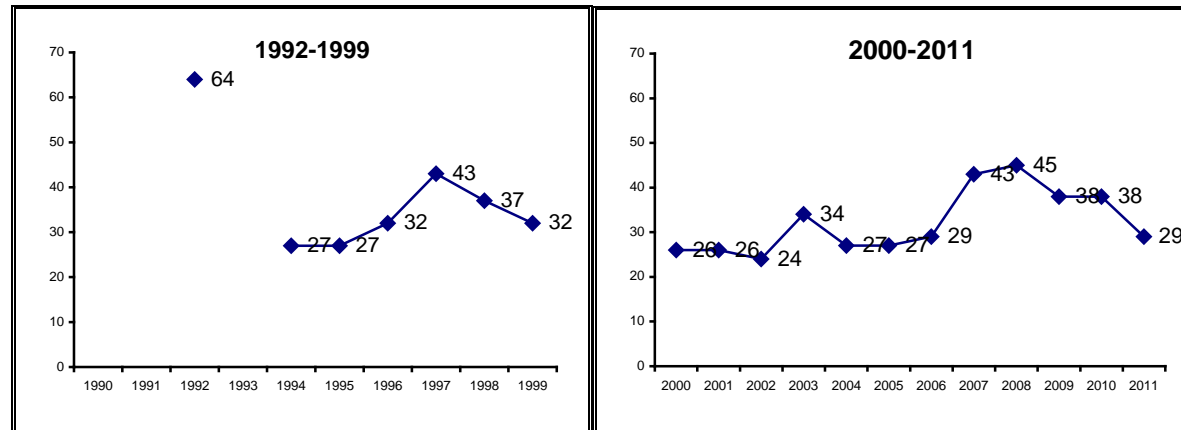
WIN—Gallup International





Trend of Hope and Despair in Czech Republic
 1977-2011
 (for all years for which data are available)

DESPAIR



Note: Reported for all the years for which survey was carried out and data are available.

Year	1992	1994	1995	1996	1997	1998	1999	2000	2001	2002	2003	2004	2005	2006	2007	2008	2009	2010	2011
Dispare	64	27	27	32	43	37	32	26	26	24	34	27	27	29	43	45	38	38	29

Percent of Respondents

Source: Annual Global Barometer on Hope and Despair conducted by affiliates of WIN-Gallup International Association. See details on: www.gallup.com.pk, www.gallup-international.com/

EOY: 2011 Annual
Global Survey on Hope and Despair
 WIN—Gallup International



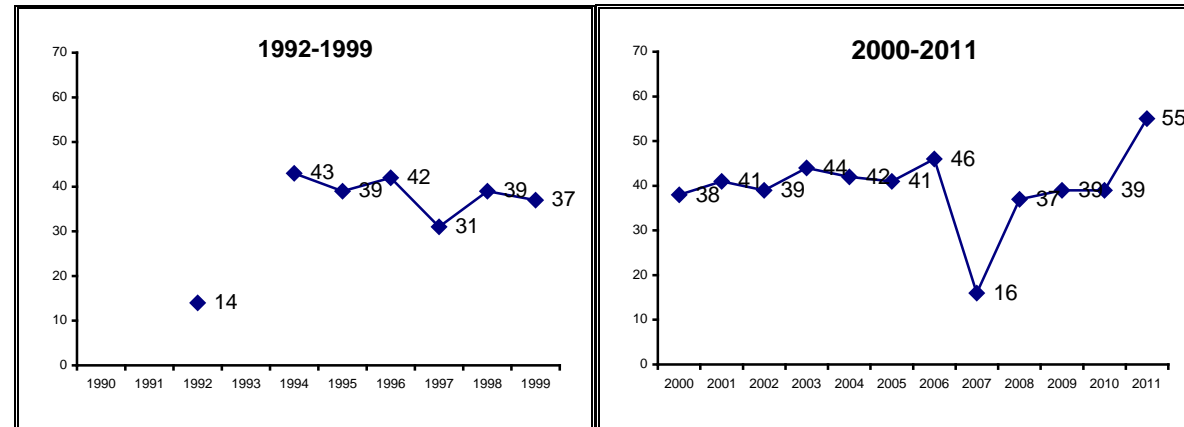


Trend of Hope and Despair in Czech Republic

1977-2011

(for all years for which data are available)

NO CHANGE



Note: Reported for all the years for which survey was carried out and data are available.

Year	1992	1994	1995	1996	1997	1998	1999	2000	2001	2002	2003	2004	2005	2006	2007	2008	2009	2010	2011
No change	14	43	39	42	31	39	37	38	41	39	44	42	41	46	16	37	39	39	55

Percent of Respondents

Source: Annual Global Barometer on Hope and Despair conducted by affiliates of WIN-Gallup International Association. See details on: www.gallup.com.pk, www.gallup-international.com/



Trend of Hope and Despair in Czech Republic

1977-2011

(for all years for which data are available)

Hope and Despair in Czech Republic

Question: **So far as you are concerned do you think that 2012 will be better or worse than 2011?**

Percent of Respondents

Serial #	Year	Better (%)	Same (%)	Worse (%)	DK/NR (%)
1	1992	18	14	64	4
2	1994	27	43	27	3
3	1995	31	39	27	3
4	1996	22	42	32	4
5	1997	18	31	43	8
6	1998	20	39	37	4
7	1999	27	37	32	4
8	2000	31	38	26	5
9	2001	29	41	26	4
10	2002	30	39	24	7
11	2003	16	44	34	5
12	2004	25	42	27	6
13	2005	29	41	27	4
14	2006	22	46	29	3
15	2007	37	16	43	4
16	2008	14	37	45	5
17	2009	19	39	38	4
18	2010	18	39	38	6
19	2011	12	55	29	4

Source: Annual Global Barometer on Hope and Despair conducted by affiliates of WIN-Gallup International Association. See details on: www.gallup.com.pk, www.gallup-international.com/

Serial #	Years	Better (%)	Same (%)	Worse (%)	DK/NR (%)
1	1991	10	16	62	12
2	1992	17	14	64	6

*Note = Before 1993 when it was sovereign state Czechoslovakia.





Trend of Hope and Despair in Czech Republic

1977-2011

(for all years for which data are available)

Economic prosperity in Czech Republic

Question: **Compared with this year, in your opinion, will next year be a year of economic prosperity, economic difficulty or remain the same?**

Percent of Respondents

Serial #	Years	Economic prosperity (%)	Remain the same (%)	Economic Difficulty (%)	DK/NR (%)
1	1997	6	29	55	10
2	1998	8	36	49	7
3	1999	11	37	46	6
4	2000	18	42	32	8
5	2001	14	48	32	6
6	2002	18	44	31	7
7	2003	9	46	39	6
8	2004	15	45	35	6
9	2005	19	47	31	4
10	2006	16	48	33	3
11	2007	33	42	20	5
12	2008	7	38	50	5
13	2009	11	42	42	5
14	2010	11	41	41	7
15	2011	6	60	30	4

Source: Annual Global Barometer on Hope and Despair conducted by affiliates of WIN-Gallup International Association. See details on: www.gallup.com.pk, www.gallup-international.com/





Trend of Hope and Despair in Czech Republic

1977-2011

(for all years for which data are available)

Unemployment in Czech Republic

Question: **In the next 12 months do you expect the number of unemployed in ... (YOUR COUNTRY) to increase a lot, to increase slightly, remain the same, fall slightly or fall a lot?**

Percent of Respondents

Serial #	Years	Increase a lot (%)	Increase slight (%)	Remain the same (%)	Fall Slight (%)	Fall a lot (%)	DK/NR (%)
1	1997	22	46	18	4	1	9
2	1998	28	44	17	5	1	5
3	1999	23	46	19	7	1	4
4	2000	12	36	28	18	1	5
5	2001	10	38	35	12	1	5
6	2002	12	39	29	13	2	5
7	2003	16	39	31	8	0	5
8	2004	9	34	35	17	1	5
9	2005	6	33	38	17	2	3
10	2006	6	27	41	19	2	5
11	2007	2	24	38	31	1	4
12	2008	18	38	31	8	1	4
13	2009	17	32	31	12	2	6
14	2010	12	25	38	16	1	8

Source: Annual Global Barometer on Hope and Despair conducted by affiliates of WIN-Gallup International Association. See details on: www.gallup.com.pk, www.gallup-international.com/





Trend of Hope and Despair in Czech Republic

1977-2011

(for all years for which data are available)

Employment in Czech Republic

Question: **Are you now in paid employment - either full time or part time?**

Percent of Respondents

Serial #	Years	Full time (%)	Part time (%)	No (%)
1	1997	62	5	33
2	1998	44	43	13
3	1999	59	7	34
4	2000	63	6	31
5	2001	67	6	27
6	2002	65	7	28
7	2003	65	4	30
8	2004	65	7	28
9	2005	62	4	34
10	2006	57	3	40
11	2007	42	21	36
12	2008	63	5	33
13	2009	65	4	31
14	2010	66	5	29

Source: Annual Global Barometer on Hope and Despair conducted by affiliates of WIN-Gallup International Association. See details on: www.gallup.com.pk, www.gallup-international.com/





Trend of Hope and Despair in Czech Republic

1977-2011

(for all years for which data are available)

Job security in Czech Republic

Question: **Do you think your present job is safe, or do you think there's a chance you may become unemployed?**

Percent of Respondents

Serial #	Years	Present job safe (%)	Chance of unemployment (%)	DK/NR (%)
1	1997	45	47	8
2	1998	44	43	13
3	1999	43	46	11
4	2000	37	45	18
5	2001	40	49	11
6	2002	43	44	13
7	2003	36	56	9
8	2004	38	52	11
9	2005	38	56	6
10	2006	36	54	10
11	2007	78	14	8
12	2008	37	58	5
13	2009	32	59	8
14	2010	31	65	4

Source: Annual Global Barometer on Hope and Despair conducted by affiliates of WIN-Gallup International Association. See details on: www.gallup.com.pk, www.gallup-international.com/





Trend of Hope and Despair in Czech Republic

1977-2011

(for all years for which data are available)

Ease of Job in Czech Republic

Question: **If you became unemployed, do you think you'd be able to find a new job fairly quickly, or do you think it might take longer?**

Percent of Respondents

Serial #	Years	New job quickly (%)	May take longer (%)	Wouldn't look (%)	DK/NR (%)
1	1997	36	45	6	13
2	1998	32	50	6	12
3	1999	30	50	10	10
4	2000	30	50	6	14
5	2001	35	52	4	9
6	2002	35	51	5	8
7	2003	24	63	5	8
8	2004	28	58	5	9
9	2005	31	58	7	4
10	2006	36	50	9	5
11	2007	39	45	7	8
12	2008	35	55	5	5
13	2009	26	60	5	9
14	2010	29	60	6	5

Source: Annual Global Barometer on Hope and Despair conducted by affiliates of WIN-Gallup International Association. See details on: www.gallup.com.pk, www.gallup-international.com/





Celebrating 34 years of The World's Leading Global Barometer (1977-2011)

For more details :

Rushna Shahid
Assisting Gallup International
Opinion Research Group
Tele: +92-51-2655630
Fax : +92-51-2655632
Email: rushna.shahid@gallup.com.pk

Irene Zuettel
Gallup International
Zurich
Tele: +41 (0) 44 806 6650
Fax : +41 (0) 44 806 6660
Email:jirene.zuettel@gallup-international.com

Disclaimer: Gallup International Association is not related to Gallup Inc., headquartered in Washington D.C which is no longer a member of Gallup International Association. Gallup International Association does not accept responsibility for opinion polling other than its own. For further details see website: www.Gallup-international.com