



Gilani Research Foundation is a not for profit public service project to provide social science research to students, academia, policy makers and concerned citizens in Pakistan and across the globe.

Gilani Research Foundation is headed by Dr. Ijaz Shafi Gilani who pioneered the field of opinion polling in Pakistan and established Gallup Pakistan in 1980. Currently Dr. Gilani, who holds a PhD from the Massachusetts Institute of Technology (MIT) and has taught at leading universities in Pakistan and abroad, is Chairman of Gallup Pakistan.

ANNUAL HOPE AND DESPAIR-Optimists and Pessimists Index for Pakistan: 2000-2009: GILANI POLL/GALLUP PAKISTAN

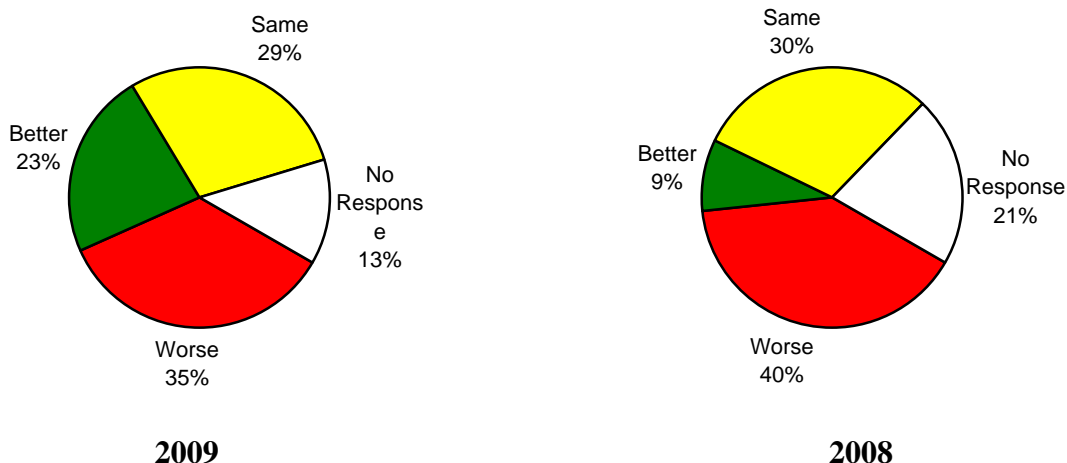
Islamabad, January 1, 2010

This is a special release from Gilani Poll, comprising three sections: the first section provides the latest year data, the second gives comparison for all the ten years since 2000, and the third section gives a short commentary by Dr. Ijaz Shafi Gilani, Chairman of Gilani Research Foundation in Pakistan and a member of Gallup International Board, the apex body which runs its global polls.

OPTIMISM AND PESSIMISM FOR 2010

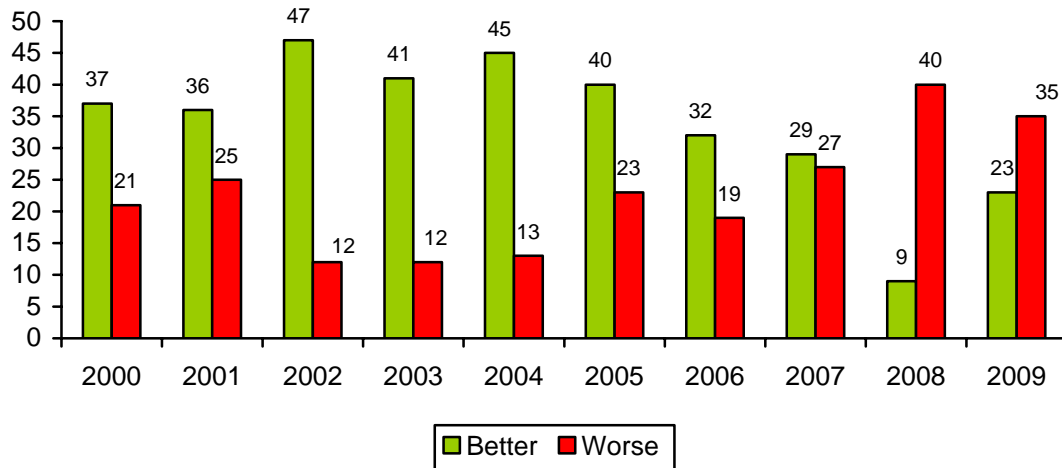
More Pakistanis continue to be pessimistic rather than optimistic about the new year, yet there is a positive change from a year ago. A year ago only 9% were optimists who believed Pakistan will have a better year than the one which had ended at that time. Now the figure has risen to 23%. A year ago 40% were pessimist who believed the new year will be worse. In other words pessimists outnumbered optimists by more than four times. Now the pessimists have dropped to 35% and are matched more closely in comparison with a year ago by 23% of the optimists.

Question: "As far as you are concerned, do you think that the new year will be better or worse than the last one?"



Source: Gilani Poll conducted by Gallup Pakistan, the Pakistani affiliate of Gallup International Association (www.gallup-international.com; www.gallup.com.pk)

Comparison of Gallup-Gilani Poll Hope and Despair figures for the decade shows that in Pakistan optimists outnumber pessimists for all years except the last two. But the trend seems to have reversed in favor of optimism.



Important note:

In each case the balance from a total of 100% is explained by those who believed the new year will remain the same or they did not give specific response.

Gallup-Gilani Poll findings for the first decade of 21st Century

*Source: Gilani Poll conducted by Gallup Pakistan,
the Pakistani affiliate of Gallup International Association (www.gallup-international.com; www.gallup.com.pk)*

Commentary by Dr. Ijaz Shafi Gilani

Pakistan is still gloomy where pessimists outnumber optimists but the trend seems to have reversed. A year ago optimists were outnumbered by pessimists by more than four times. Now they are only 12% points ahead of optimists. This is a move in the positive direction despite the much carnage and violence which marked the year 2009. The narrowing of gap between pessimists and optimists is possibly explained by the growing confidence in the ordinary citizen that they can exercise their will to determine the course of the country. Their confidence is particularly rooted in four events of 2009: Restoration of the Chief Justice and Punjab Government; Striking down of NRO, a law seen by most as symbol of corrupt governance; The view that a home grown policy could check the tide of terrorism in Swat; Rejection of public policy which accepted American aid as a way of life (Kerry-Lugar Bill). These events have given greater confidence, even if only symbolic in some cases, to the ordinary citizens that they can change the course of events. Thus despite the continuation of terrorism, economic troubles and political uncertainty, the ranks of optimists have started to gain numbers.

The recent Gilani poll was conducted in Pakistan by Gallup Pakistan, affiliated with Gallup International Association, among a sample of 2442 men and women from rural and urban areas of all

four provinces of the country, during October 2009. Error margin is estimated to be approx. + 2-3 percent at 95% confidence level.

Gallup Pakistan proposes that its poll results be attributed as Gilani Poll conducted by Gallup Pakistan, the Pakistani affiliate of Gallup International. This is to distinguish our polls from polls on Pakistan sometimes released by other organizations not part of Gallup International Association (www.gallup-international.com) and referred to by the same title. Also please see necessary Disclaimer on our website (www.gallup.com.pk). Gallup Pakistan takes responsibility for only its own polls on Pakistan.

For more survey data on social and other issues see website www.gallup.com.pk

For any queries please contact:
Ms. Saadia Khalid
Assistant Manager (Research)

Phone: +92-51-2655630
E-mail: saadia.khalid@gallup.com.pk